



**First Floor**

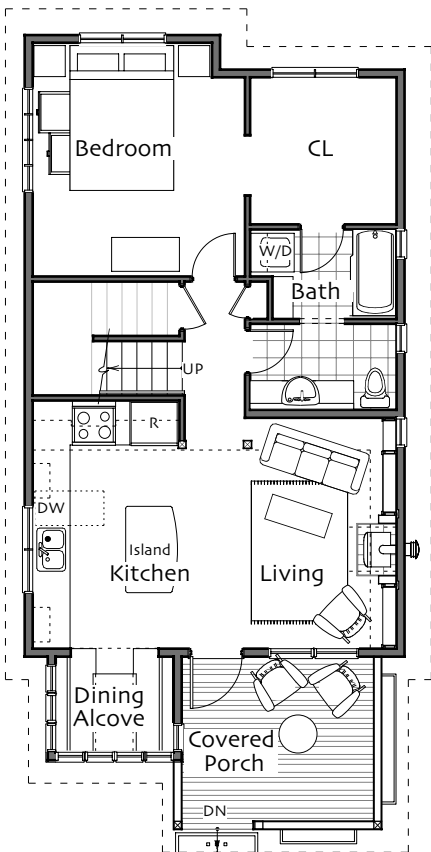
Kitchen/Living Room 13'-5" x 21'-0"  
 Dining Alcove 6'-10" x 5'-7"  
 Bedroom 12'-0" x 10'-6"  
 Bathroom full

**Second Floor** >5'

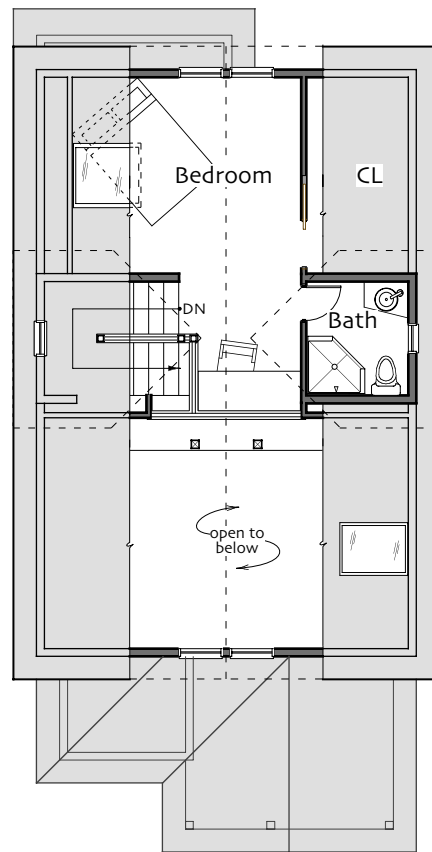
Bedroom 13'-0" x 21'-6"  
 Bathroom three-quarter

**Heated Space 1025 sq ft**

Footprint 46' x 24'



**First Floor Plan**



**Second Floor Plan**

© 2004 Ross Chapin Architects • For information on ordering plans go to [www.rosschapin.com](http://www.rosschapin.com)



**ROSS CHAPIN ARCHITECTS**  
 Post Office Box 230 • 195 Second Street • Langley, Washington 98260  
 Ph: (360) 221 2373 • Em: [inquiry@rosschapin.com](mailto:inquiry@rosschapin.com)

**Coho version B**