

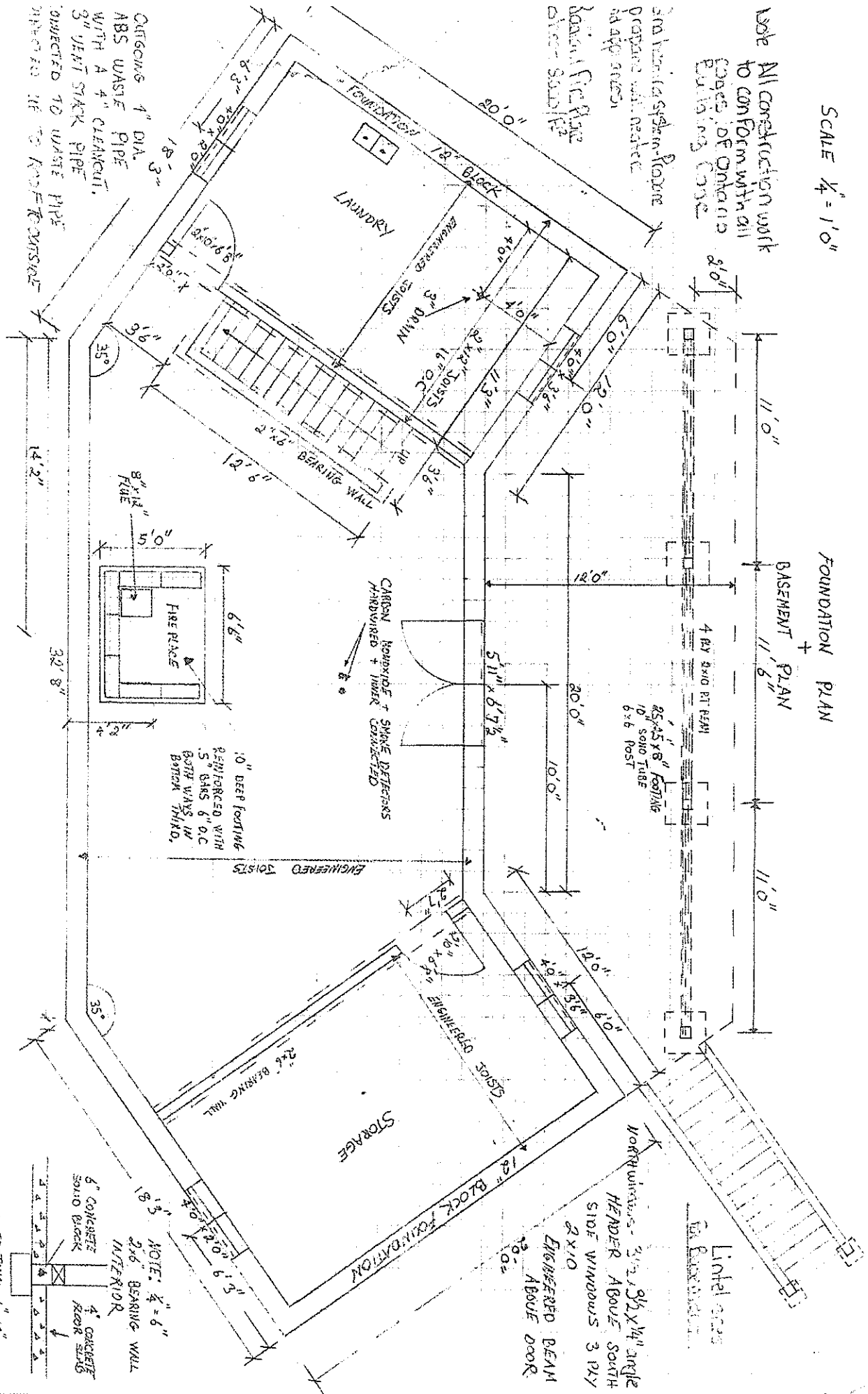
SCALE 1/4" = 1'-0"

Note All construction work to conform with all codes of Ontario Building Code

3/4" Fire-Retardant System-Roofing Prepare with neoprene Adhesive

Basement Fire-Retardant System-Roofing Prepare with neoprene Adhesive

FOUNDATION + BASEMENT PLAN



Outgoing 1" DIA. ABS WASTE PIPE WITH A 4" CLEARANCE. 3" JELLY STACK PIPE CONNECTED TO WASTE PIPE THROUGH TO THE OUTSIDE

10" DEEP FOOTING REINFORCED WITH .5" BARS 6" O.C BOTH WAYS IN BOTTOM THIRD.

CARBON MONOXIDE + SMOKE DETECTORS HARDWIRED + INTER CONNECTED

NOTE: 1/4" = 6" INTERIOR 2x6" BEARING WALL 6" CONCRETE SAND BRICK 4" CONCRETE REAR SLAB CONC. FOOTING 6x12"

North Windows - 2'x2' 8 1/2" x 14" angle HENDER ABOVE SOUTH SIDE WINDOWS 3 PLY 2x10 ENGINEERED BEAM ABOVE DOOR

Lintel over 2x6" BRICK

4 BAY BRG RT BEAM 85x25x8" FOOTING 10" SOLID TUBE 6x6 POST

ENGINEERED JOISTS

ENGINEERED JOISTS

ENGINEERED JOISTS

ENGINEERED JOISTS

ENGINEERED JOISTS

ENGINEERED JOISTS

ENGINEERED JOISTS

ENGINEERED JOISTS

ENGINEERED JOISTS

ENGINEERED JOISTS

ENGINEERED JOISTS

ENGINEERED JOISTS

ENGINEERED JOISTS

ENGINEERED JOISTS