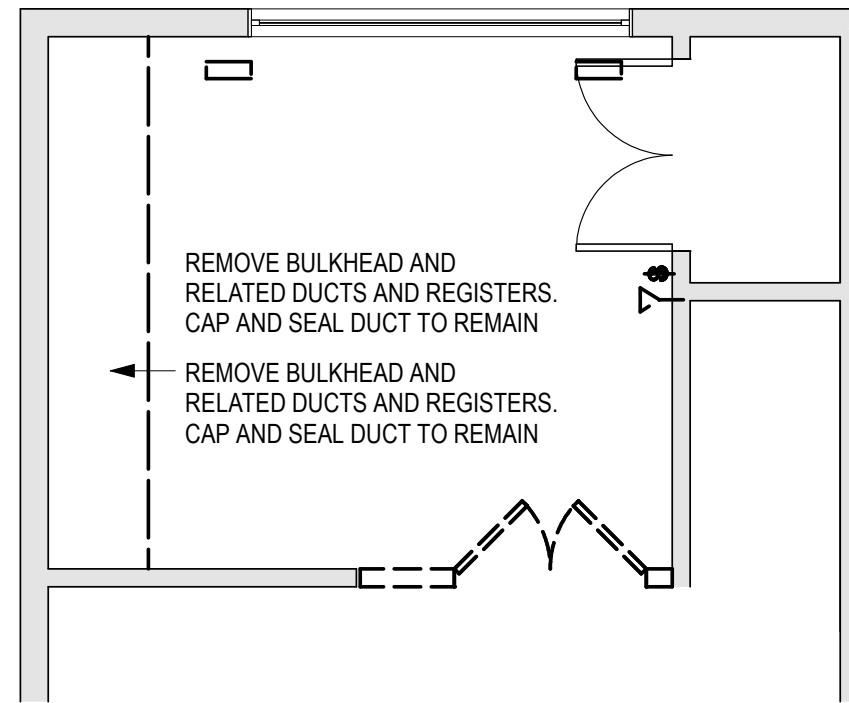


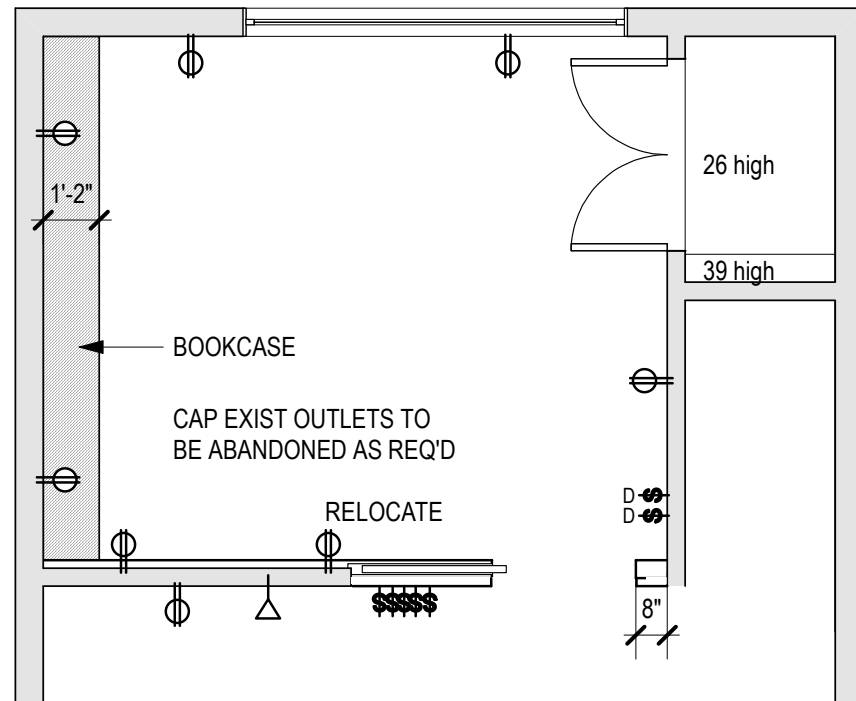
### DEMOLITION NOTES

1. REMOVE BULKHEAD AND RELATED DUCTS AND REGISTERS. CAP AND SEAL DUCT TO REMAIN
2. CAP OUTLETS, SWITCHES AND TELE/DATA PORTS AS REQ'D BY CODE.
3. REMOVE ALL ITEMS INDICATED AS DASHED.

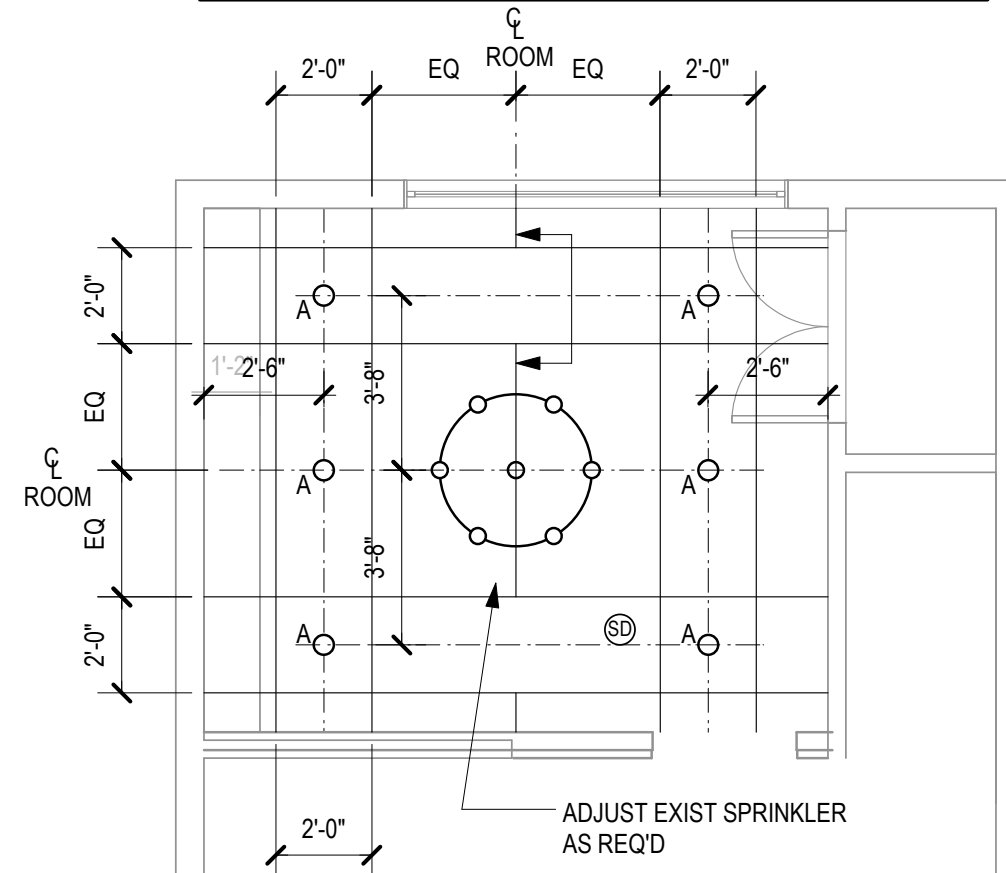


1 Demo Plan  
Scale: 1/4" = 1'-0"

LIGHT FIXTURE A:  
SYSTEMALX "TRIMMER" 4601, SQUARE APERTURE, OR EQUAL



1 Arch/Millwork Plan  
Scale: 1/4" = 1'-0"



1 Reflected Ceiling Plan  
Scale: 1/4" = 1'-0"

PROJECT

?

ISSUED  
PERMIT SET 08.24.07

1

Drawing Title:

PLANS

Drawn: GH  
Date: 04.19.09  
Scale: 1/4"

A1