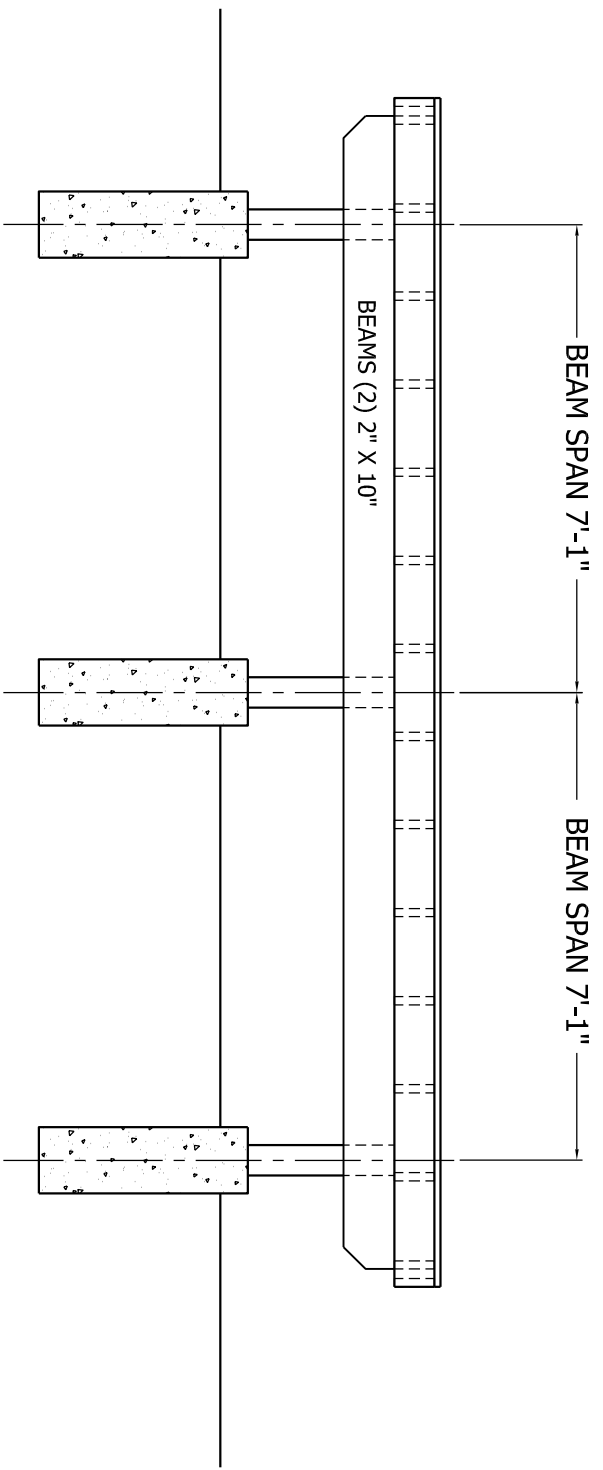
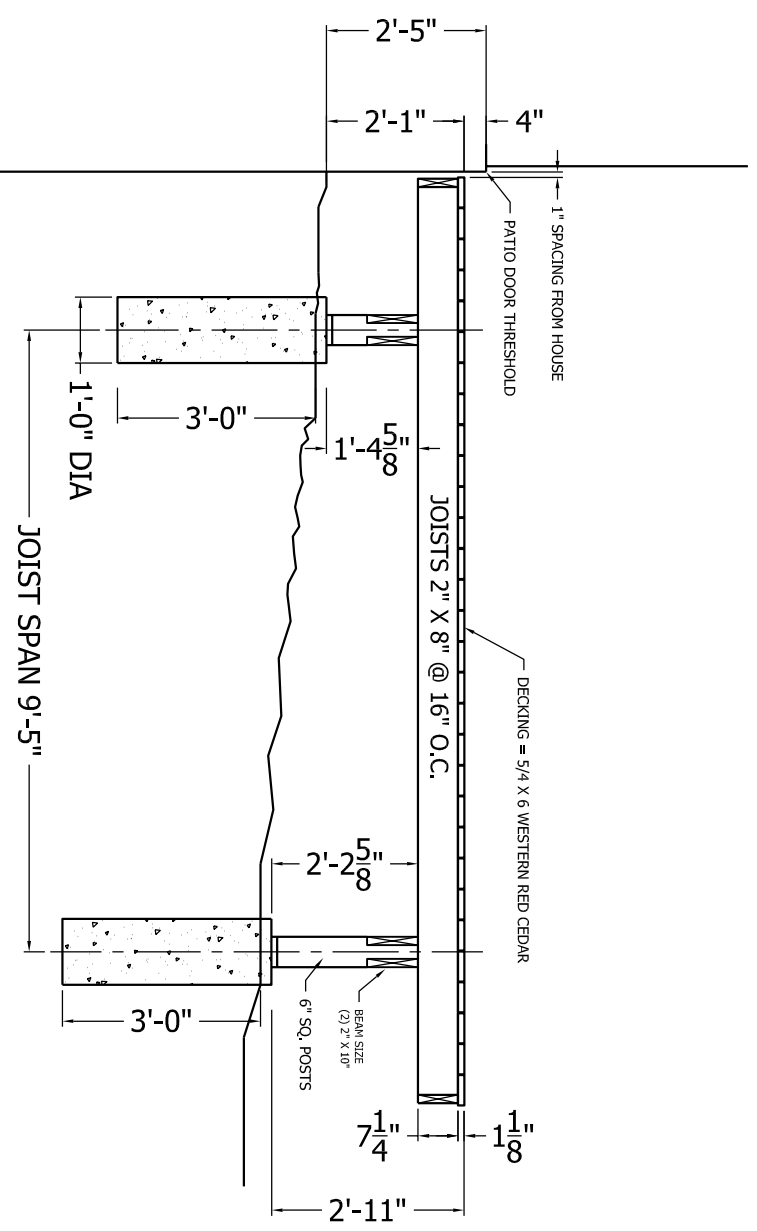
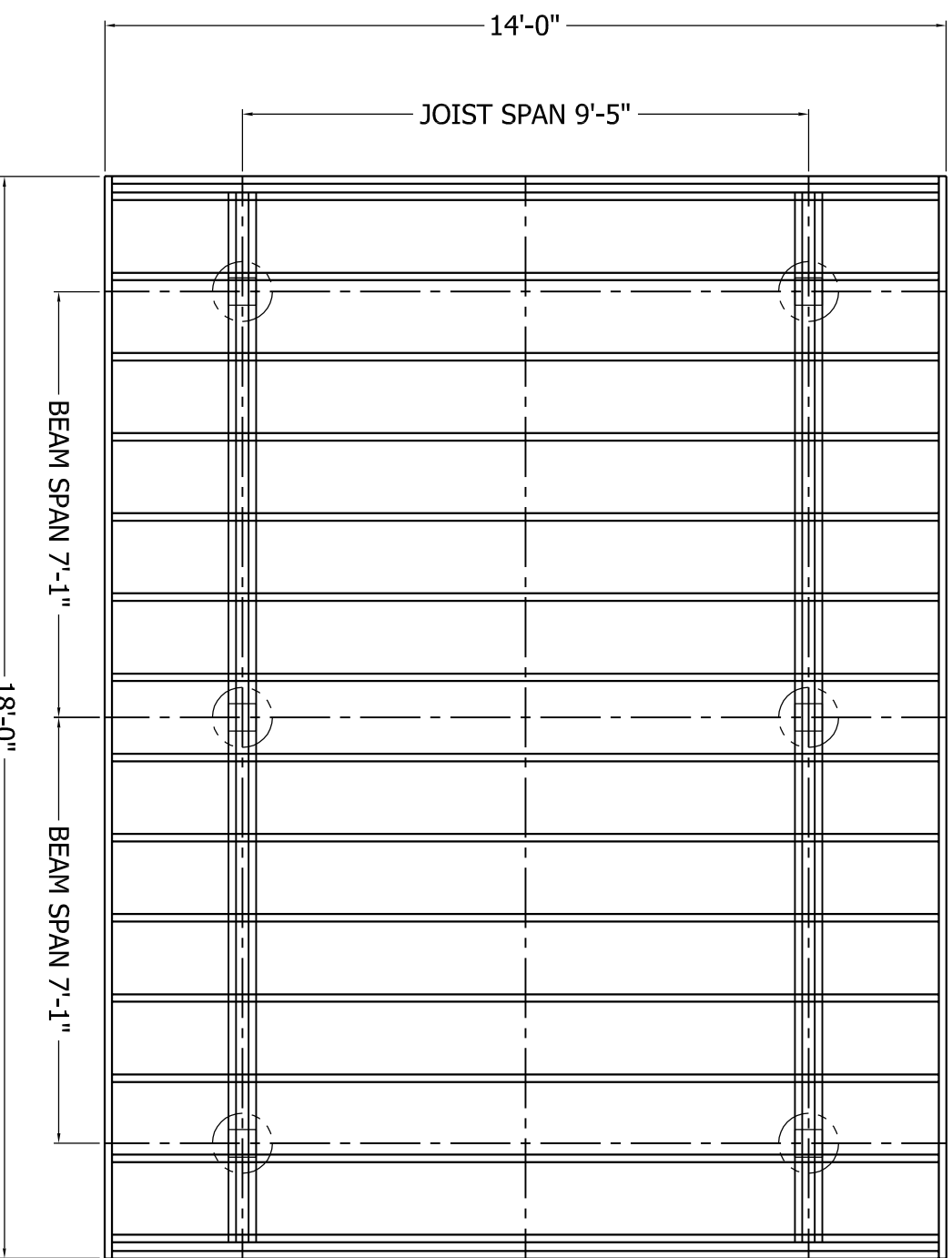
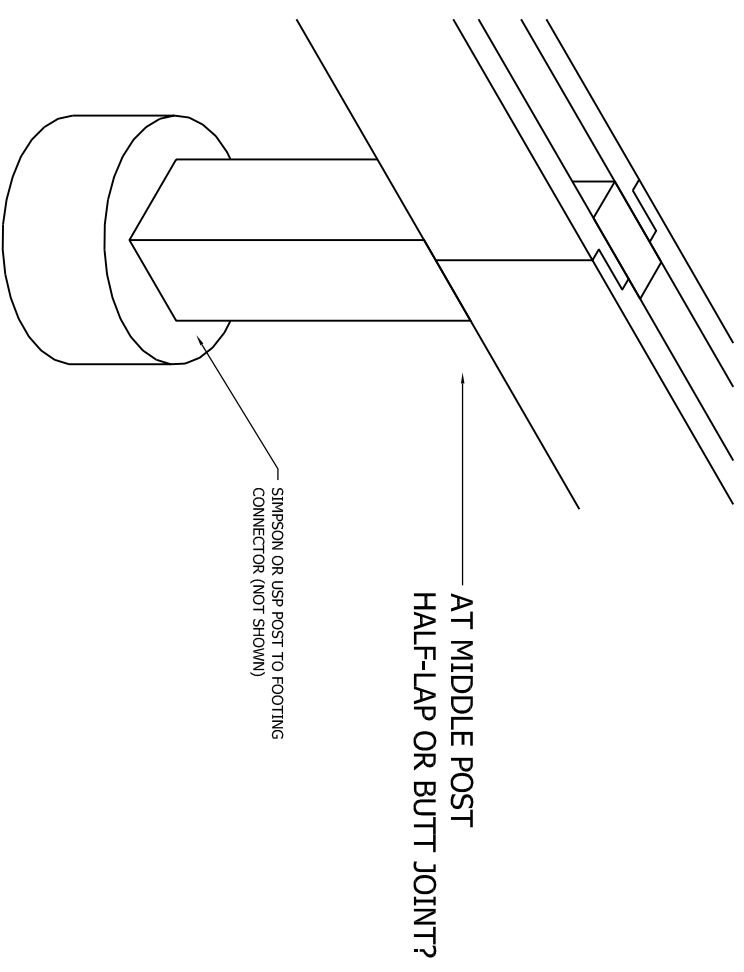


DECK = 14' D x 18' W

joist span = 113 in (9'-5") joist size = 2" x 8" (actual 1 1/2" x 7 1/4")
beam span = 85" (7'-1") beam size 2" x 10" (actual 1 1/2" x 9 1/4")
lumber species = PT Southern Pine or PT Douglas Fir



1 SIDE ELEV-FREE STANDING DECK

Scale: 3/4" = 1'-0" (1/8")

2 FRONT ELEV-DECK

Scale: 3/4" = 1'-0" (1/8")