

NOTES:

ISSUED FOR CONSTRUCTION
 Date: August 11th, 2011

Attn. Steel Suppliers
 Where there is a difference between the plate list and the dimensioned drawings, the drawings shall be deemed correct.

Aug 11/11	ISSUED FOR CONSTRUCTION	CrS		
Aug 9/11	OUT FOR APPROVALS ONLY	CrS		
July 4/11	OUT FOR APPROVALS ONLY	CrS		
NO.	DATE	CHANGE	BY	CH

REVISIONS

FRAMING SPECIFICATIONS

HOLES	1/8" larger than bolt.
SLOTS	1/8" wider than plate th.

SPECIAL INSPECTIONS

CWB or AWS	NO
MPI	NO
TITLE 24	NO

STRUCTURLAM SPECIFICATIONS

SPECIES & STRESS GRADE	D.FIR, 24f-EX & 16c-E (UNO)
TYPE OF GLUE	RESORCINOL
SIZE OF LAMINATIONS	1 1/2"
APPEARANCE GRADE	QUALITY & INDUSTRIAL
WRAPPING	INDIVIDUAL POLY
STAIN	1 COAT SIDE SEALER
CAMBER	NONE
INSPECTION	CSA-0122
STEEL	300W
FINISH	Powder-Coat Black
BOLT/LAG GRADE	ASTM A307 U/N
FINISH	Hot Dipped Galvanized
WELDS	Conform To CSA W59. Fabricator & Erector To Be Fully Approved By The CWB To CSA W411 All Welders To Be CWB Certified. Use 49XX Electrodes
MARK ALL CONNECTORS WITH TAG	

STRUCTURLAM PRODUCTS LTD.
 2176 Government St.
 Penticton, B.C. V2A 8B5
 Ph: 250-492-8912
 FAX: 250-492-8906
 Website: www.structurlam.com
 Email: sales@structurlam.com

PROJECT
Summerland Civic Building
 Job #16774

PROJECT LOCATION
 Summerland
 British Columbia

ARCHITECT
 KMBR Architects

ENGINEER
 Fast + Epp

CONTRACTOR
 Unitech Construction

DATE	August 11th, 2011	SHEET	SL2 of 5	REV.	
DWG. NO.	3D View				

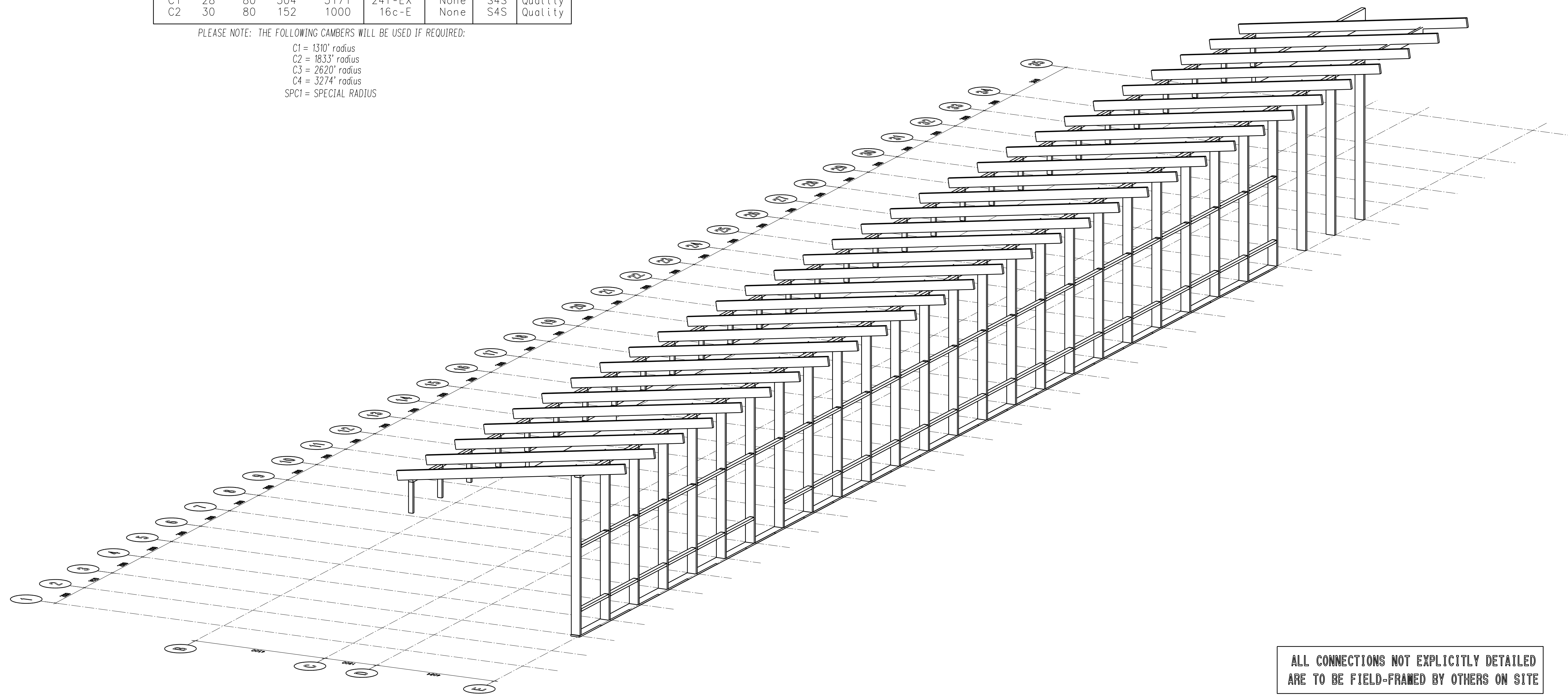
Detailer: CRS
 This drawing is the property of Structurlam Products and cannot be used or copied without their written permission.
 All Drawings Created with CadWORKS 3d V17 & 2d V17

MEMBER SCHEDULE

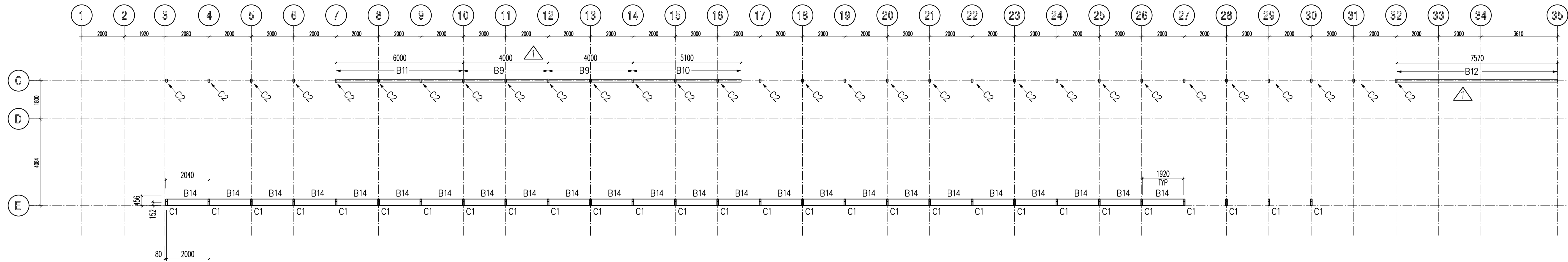
Name	Qty	Width	Height	Length	Stress Gr.	Camber	Sides Finished	Finish
B1	2	80	304	7893	24f-EX	None	S3S	Quality
B2	25	80	304	7893	24f-EX	None	S3S	Quality
B2a	3	80	304	7893	24f-EX	None	S3S	Quality
B3	47	80	152	1908	24f-EX	None	S4S	Quality
B4	1	80	190	2040	24f-E	None	S3S	Quality
B5	25	80	190	2000	24f-E	None	S3S	Quality
B6	1	80	190	2040	24f-E	None	S3S	Quality
B7	1	80	152	2040	24f-E	None	S3S	Quality
B7a	1	80	152	2040	24f-E	None	S3S	Quality
B8	27	80	152	2000	24f-E	None	S3S	Industrial
B9	2	130	342	4000	24f-EX	None	S3S	Industrial
B10	1	130	342	5100	24f-EX	None	S3S	Industrial
B11	1	130	570	6000	24f-EX	None	S3S	Industrial
B12	1	130	570	7570	24f-EX	None	S3S	Quality
B13	1	80	304	3185	24f-E	None	S3S	Quality
B14	24	50	304	1920	24f-E	None	S3S	Quality
C1	28	80	304	5171	24f-EX	None	S4S	Quality
C2	30	80	152	1000	16c-E	None	S4S	Quality

PLEASE NOTE: THE FOLLOWING CAMBERS WILL BE USED IF REQUIRED:

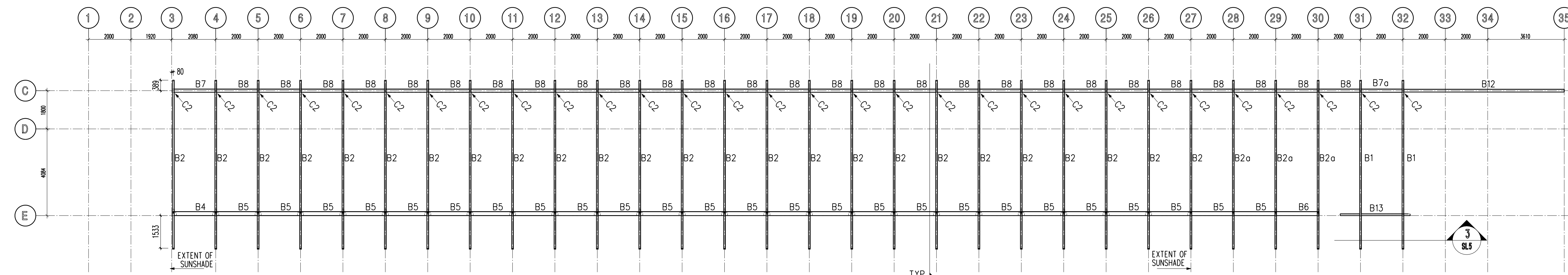
- C1 = 1310' radius
- C2 = 1833' radius
- C3 = 2620' radius
- C4 = 3274' radius
- SPC1 = SPECIAL RADIUS



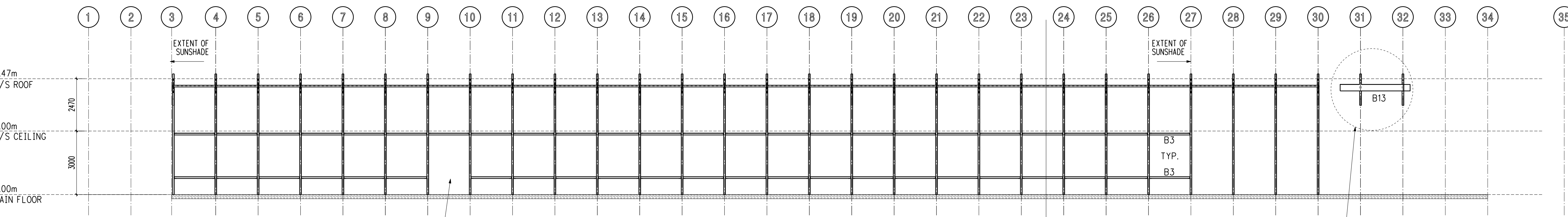
ALL CONNECTIONS NOT EXPLICITLY DETAILED
 ARE TO BE FIELD-FRAMED BY OTHERS ON SITE



A MAIN FLOOR - COLUMN LAYOUT



B ROOF - BEAM LAYOUT



C ELEVATION - SOUTH FACE

ALL CONNECTIONS NOT EXPLICITLY DETAILED ARE TO BE FIELD-FRAMED BY OTHERS ON SITE

HARDWARE & STEEL
BY STRUCTURLAM BY OTHERS

NOTES:

ISSUED FOR CONSTRUCTION
Date: August 11th, 2011

Attn. Steel Suppliers
Where there is a difference between the plate list and the dimensioned drawings, the drawings shall be deemed correct.

NO.	DATE	CHANGE	BY	CH
1	Aug 11/11	ISSUED FOR CONSTRUCTION	CrS	
2	Aug 9/11	OUT FOR APPROVALS ONLY	CrS	
3	July 4/11	OUT FOR APPROVALS ONLY	CrS	

REVISIONS

FRAMING SPECIFICATIONS

HOLES	1/8" larger than bolt.
SLOTS	1/8" wider than plate th.

SPECIAL INSPECTIONS

CWB or AWS	NO
MPI	NO
TITLE 24	NO

STRUCTURLAM SPECIFICATIONS

SPECIES & STRESS GRADE	D.FIR, 24f-EX & 16c-E (UNO)
TYPE OF GLUE	RESORCINOL
SIZE OF LAMINATIONS	1 1/2"
APPEARANCE GRADE	QUALITY & INDUSTRIAL
WRAPPING	INDIVIDUAL POLY
STAIN	1 COAT SIDE SEALER
CAMBER	NONE
INSPECTION	CSA-0122

STEEL	300W
FINISH	Powder-Coat Black

BOLT/LAG GRADE	ASTM A307 U/N
FINISH	Hot Dipped Galvanized

WELDS Conform To CSA W59, Fabricator & Erector
To Be Fully Approved By The CWB To CSA W411
All Welders To Be CWB Certified. Use 49XX Electrodes
MARK ALL CONNECTORS WITH TAG

STRUCTURLAM PRODUCTS LTD.
2176 Government St.
Penticton, B.C. V2A 8B5
Ph: 250-492-8912
FAX 250-492-8906
Website: www.structurlam.com
Email: sales@structurlam.com

PROJECT
Summerland Civic Building
Job #16774

PROJECT LOCATION
Summerland
British Columbia

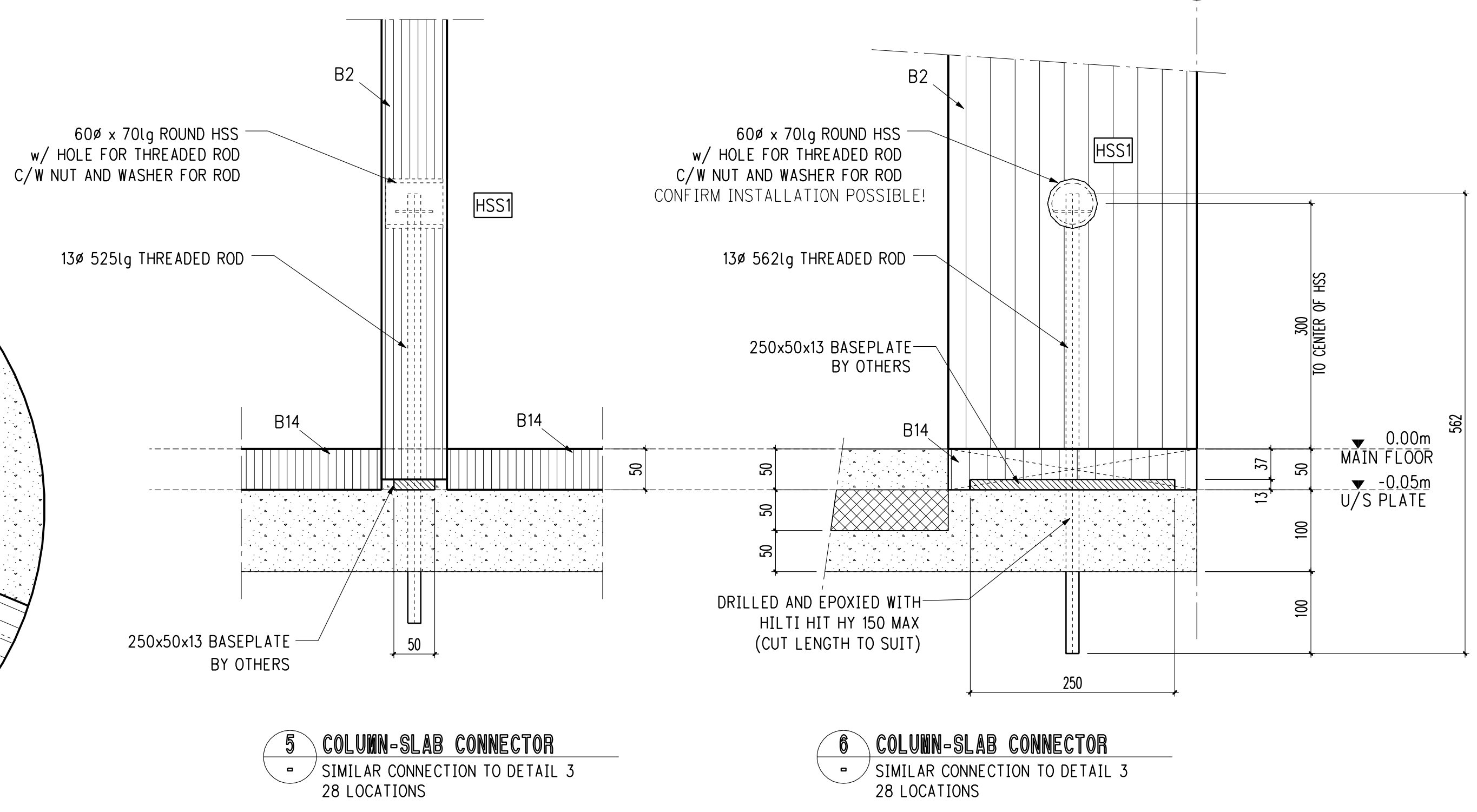
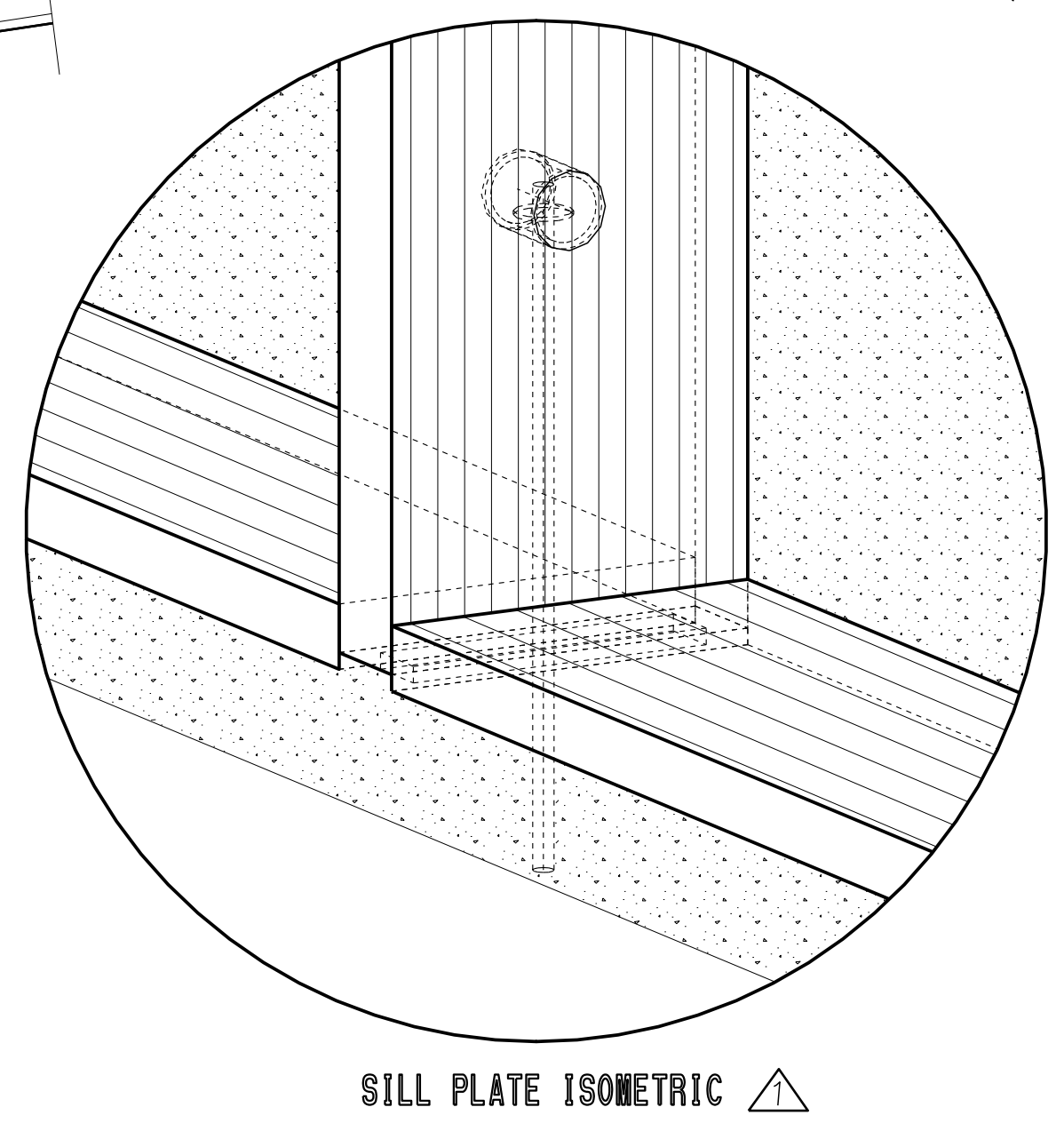
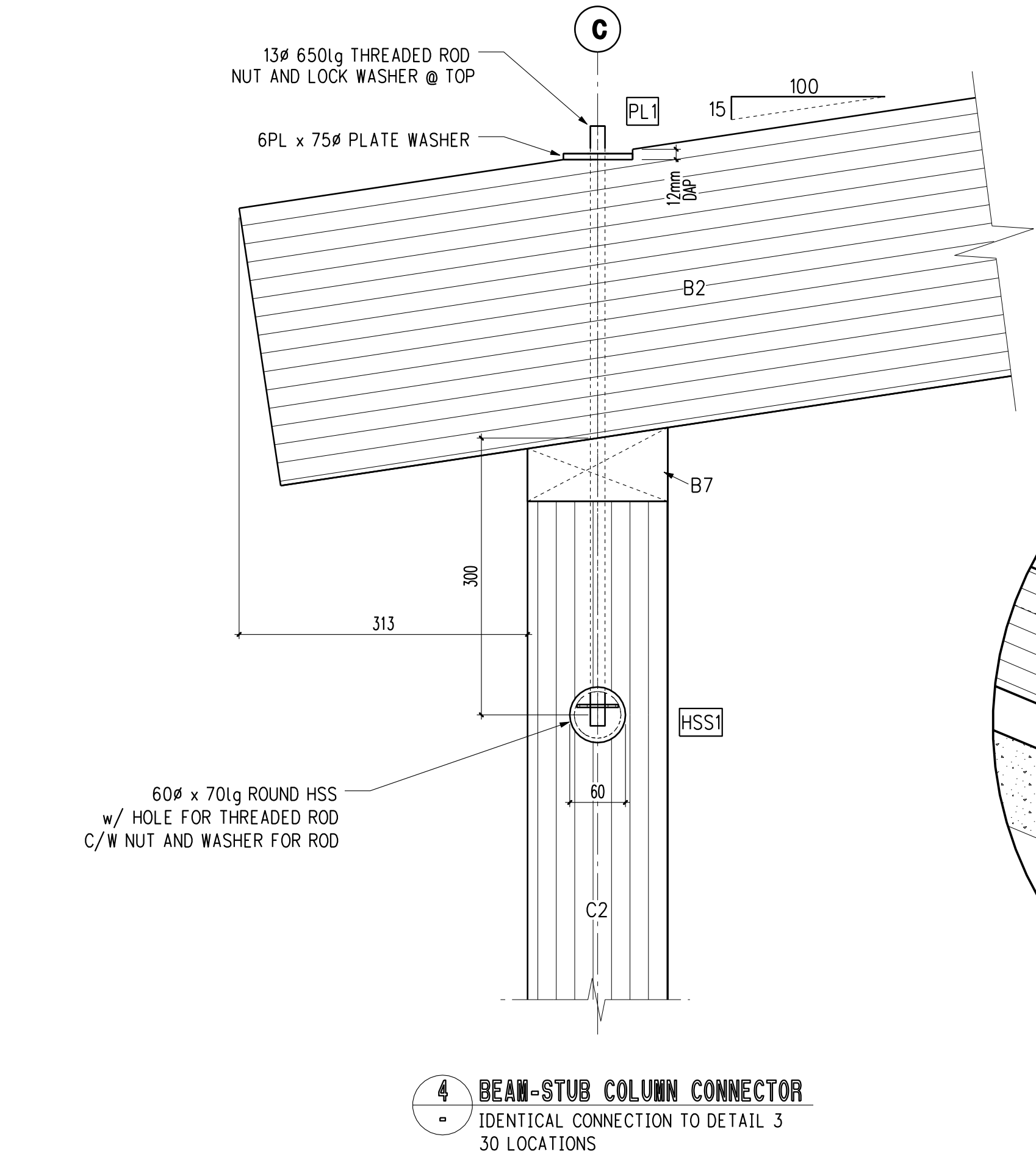
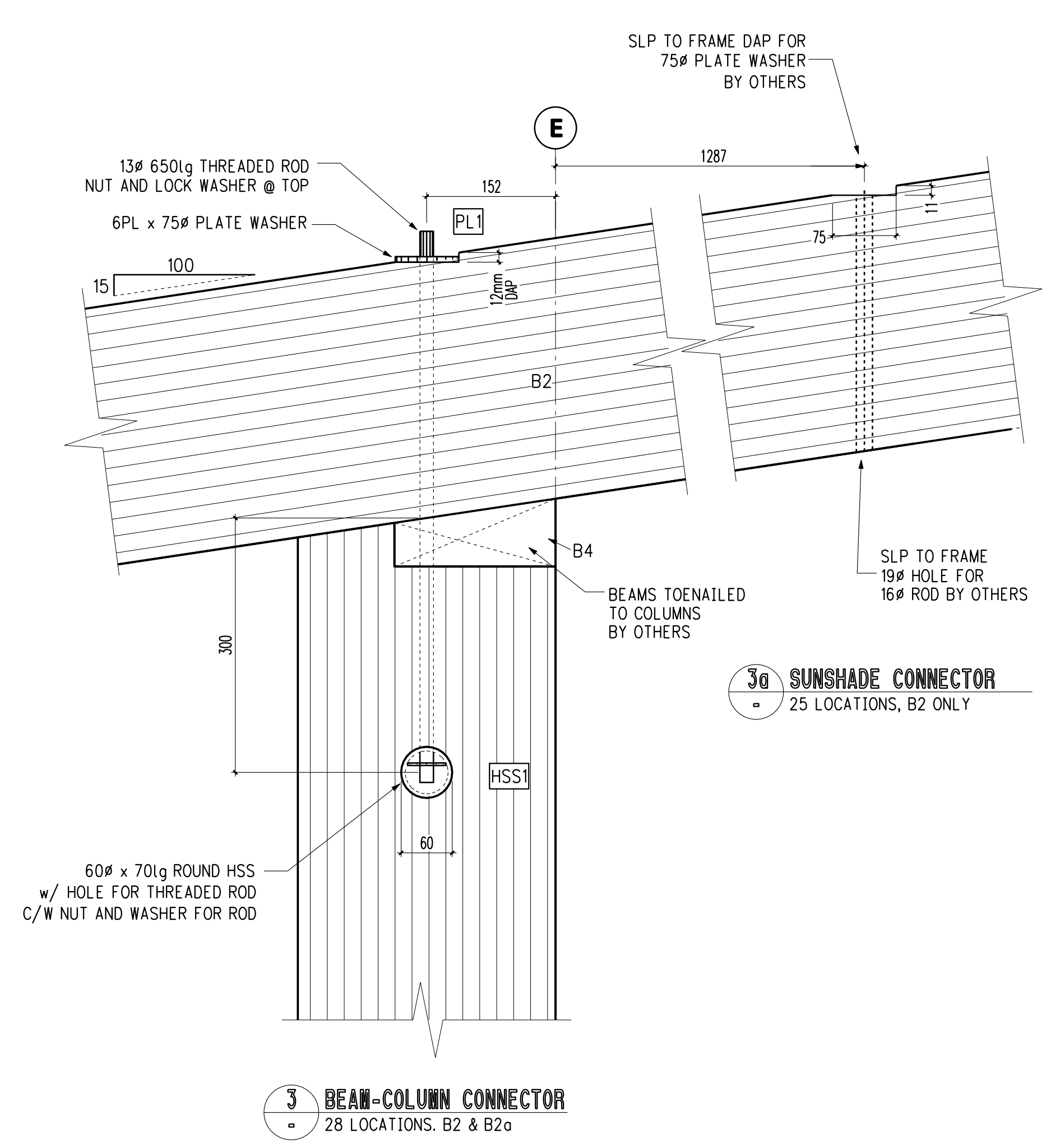
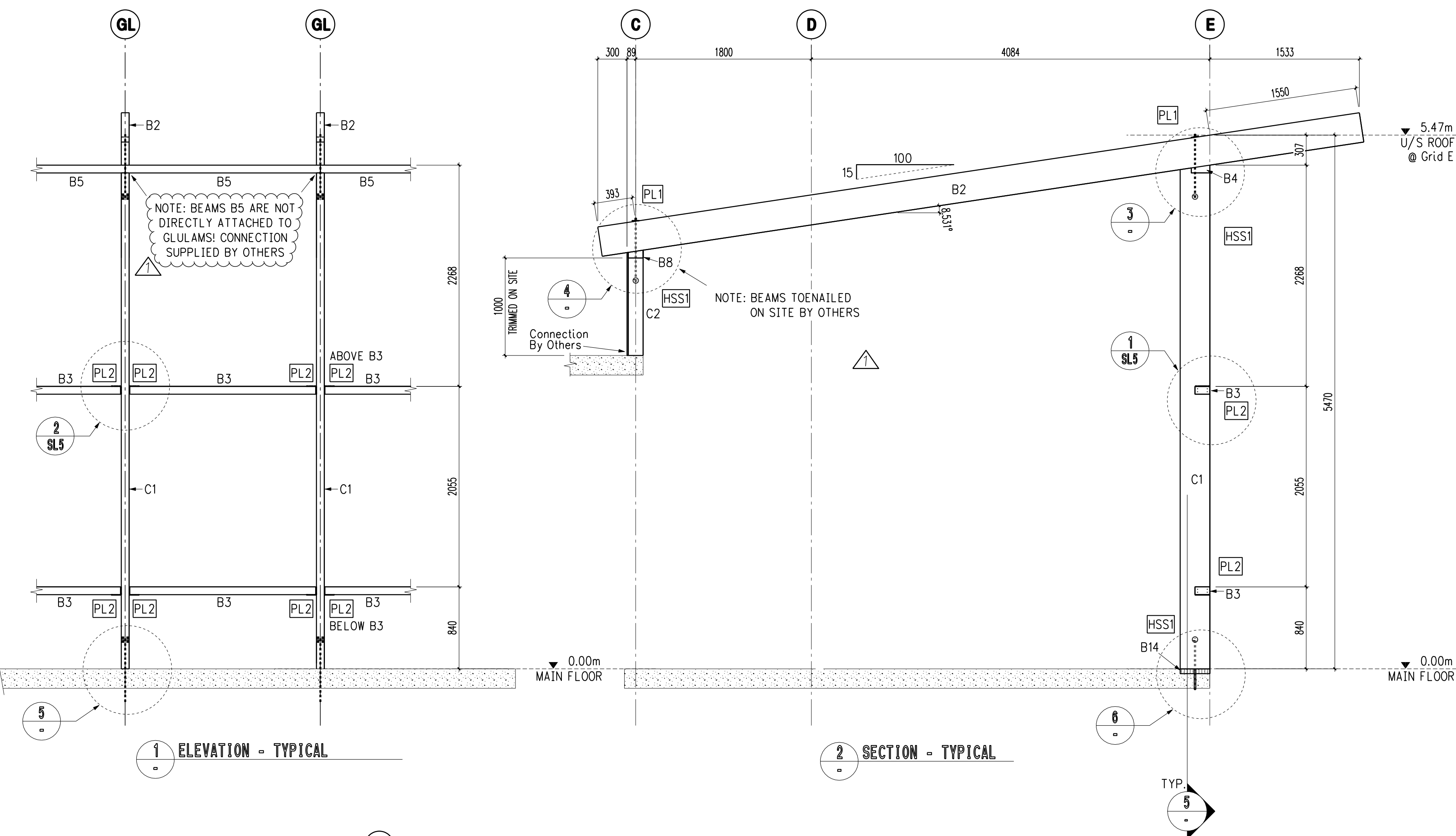
ARCHITECT KMBR Architects

ENGINEER Fast + Epp

CONTRACTOR Unitech Construction

DATE	August 11th, 2011	SHEET	SL3 of 5	REV.	
DWG. NO.	Plan Views				

Detailer: CRS
This drawing is the property of Structurlam Products and cannot be used or copied without their written permission.
All Drawings Created with CadWORKS 3d V17 & 2d V17



ALL CONNECTIONS NOT EXPLICITLY DETAILED ARE TO BE FIELD-FRAMED BY OTHERS ON SITE

HARDWARE & STEEL
BY STRUCTURLAM BY OTHERS

NOTES:

ISSUED FOR CONSTRUCTION
Date: August 11th, 2011

Attn. Steel Suppliers
Where there is a difference between the plate list and the dimensioned drawings, the drawings shall be deemed correct.

NO.	DATE	CHANGE	BY	CH
▲	Aug 11/11	ISSUED FOR CONSTRUCTION		CrS
▲	Aug 9/11	OUT FOR APPROVALS ONLY		CrS
▲	July 4/11	OUT FOR APPROVALS ONLY		CrS

REVISIONS

FRAMING SPECIFICATIONS

HOLES	1/8" larger than bolt.
SLOTS	1/8" wider than plate th.

SPECIAL INSPECTIONS

CWB or AWS	NO
MPI	NO
TITLE 24	NO

STRUCTURLAM SPECIFICATIONS

SPECIES & STRESS GRADE	D.FIR, 24f-EX & 16c-E (UNO)
TYPE OF GLUE	RESORCINOL
SIZE OF LAMINATIONS	1 1/2"
APPEARANCE GRADE	QUALITY & INDUSTRIAL
WRAPPING	INDIVIDUAL POLY
STAIN	1 COAT SIDE SEALER
CAMBER	NONE
INSPECTION	CSA-0122
STEEL	300W
FINISH	Powder-Coat Black
BOLT/LAG GRADE	ASTM A307 U/N
FINISH	Hot Dipped Galvanized
WELDS	Conform To CSA W59, Fabricator & Erector To Be Fully Approved By The CWB To CSA #411 All Welders To Be CWB Certified. Use 49XX Electrodes

MARK ALL CONNECTORS WITH TAG

STRUCTURLAM PRODUCTS LTD.
2176 Government St.
Penticton, B.C. V2A 8B5
Ph: 250-492-8912
FAX 250-492-8906
Website: www.structurlam.com
Email: sales@structurlam.com

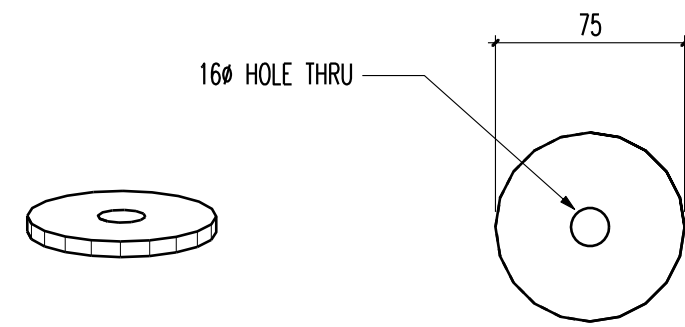
PROJECT
Summerland Civic Building
Job #16774

PROJECT LOCATION
Summerland
British Columbia

ARCHITECT KMBR Architects
ENGINEER Fast + Epp
CONTRACTOR Unitech Construction

DATE	August 11th, 2011	SHEET	SL4 of 5	REV.	
DWG NO.	Details				

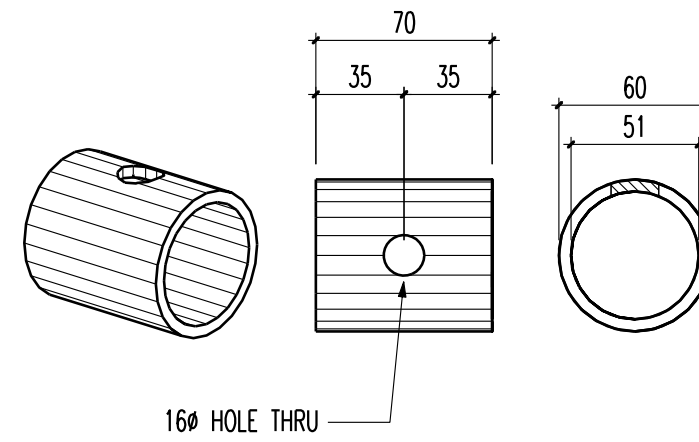
Detailer: CRS
This drawing is the property of Structurlam Products and cannot be used or copied without their written permission.
All Drawings Created with CadWORKS 3d V17 & 2d V17



PL1 60 REQ'D
as shown

α-6pl x 75ø

POWDER-COAT BLACK



HSS1 88 REQ'D
as shown

α-60ø HSS x 70
(2"ø PIPE, EXTERNAL DIAMETER 2.375")

POWDER-COAT BLACK

HARDWARE REQ'D per TOP CONNECTOR (58)

- 1- 1/2" 650lg THREADED ROD
- 2- 1/2" NUTS
- 1- 1/2" F/W
- 1- 1/2" SPRING WASHER

MIN 150mm THREAD EACH END OF ROD

HARDWARE REQ'D per BOTTOM CONNECTOR (28)

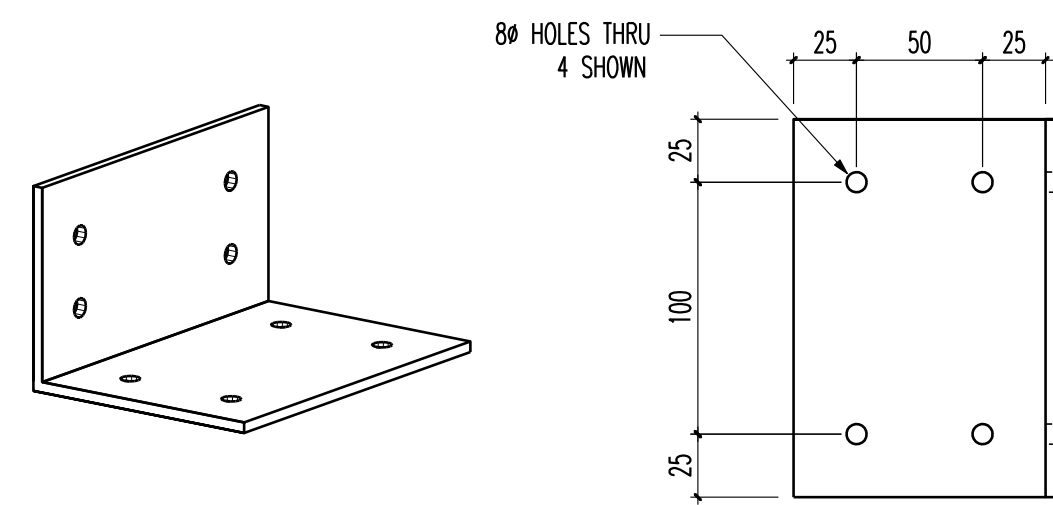
- 1- 1/2" 562lg THREADED ROD
- 1- 1/2" NUTS
- 1- 1/2" F/W
- HILTI HIT HY 150 EPOXY

MIN 150mm THREAD EACH END OF ROD

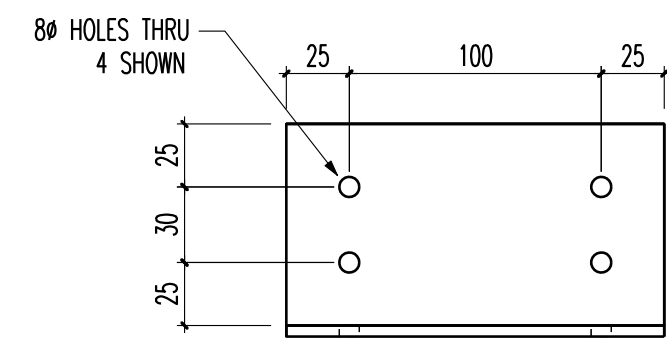
HARDWARE REQ'D per B13 CONNECTOR (2)

- 1- 1/2" 475lg THREADED ROD
- 2- 1/2" NUTS
- 1- 1/2" F/W
- 1- 1/2" SPRING WASHER

MIN 150mm THREAD EACH END OF ROD



PL2 94 REQ'D
as shown

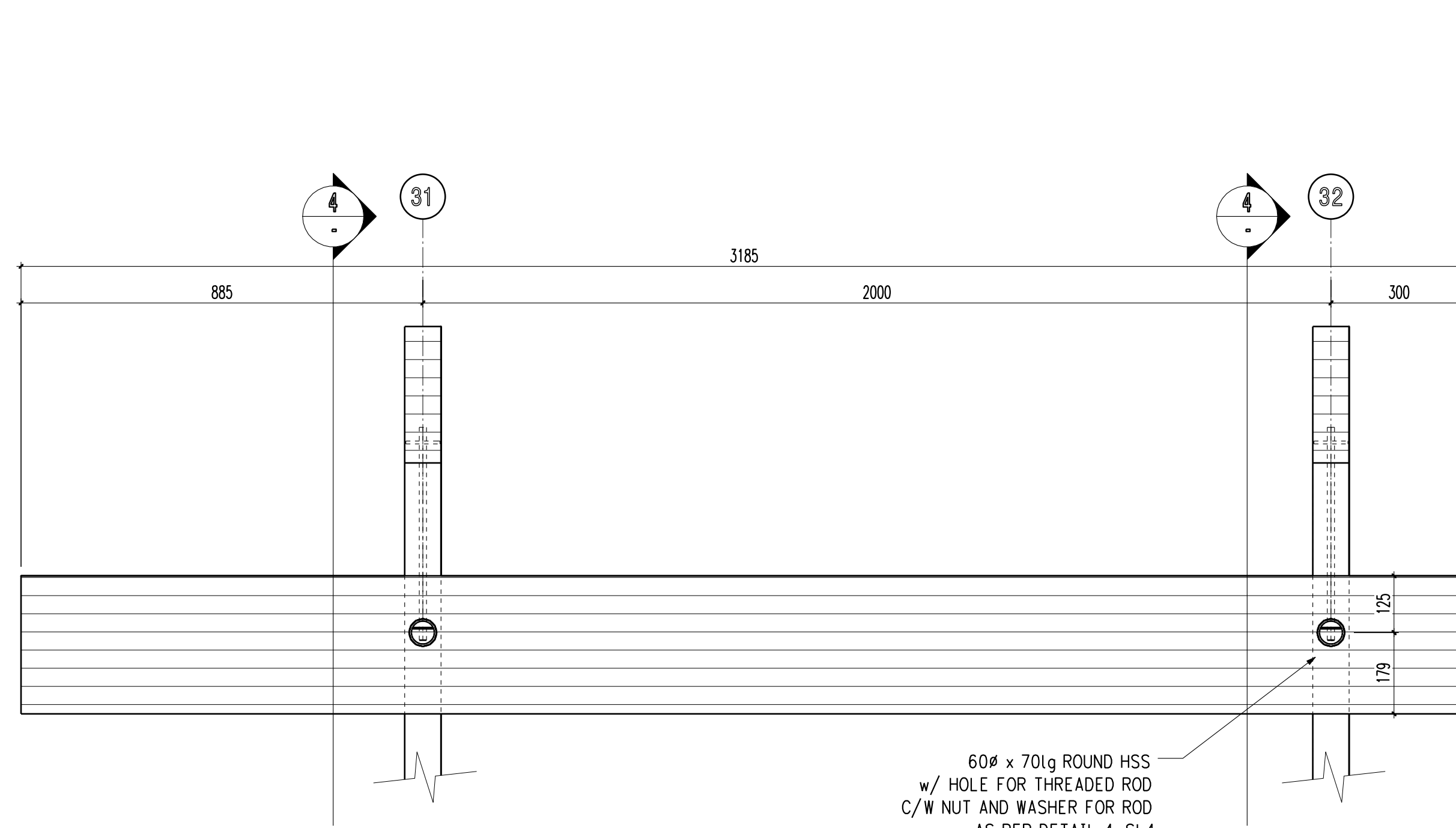
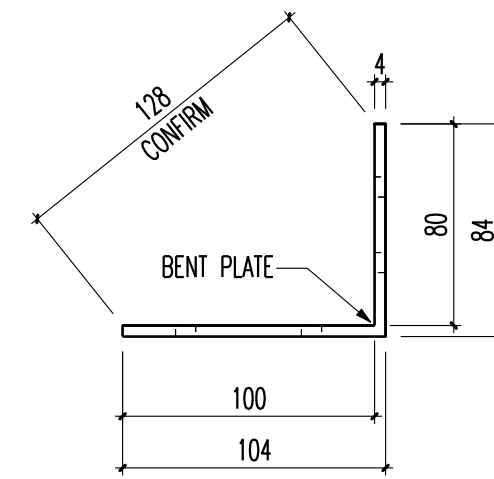


HARDWARE REQ'D per CONNECTOR

8- 6.1mmø x 38 SDS

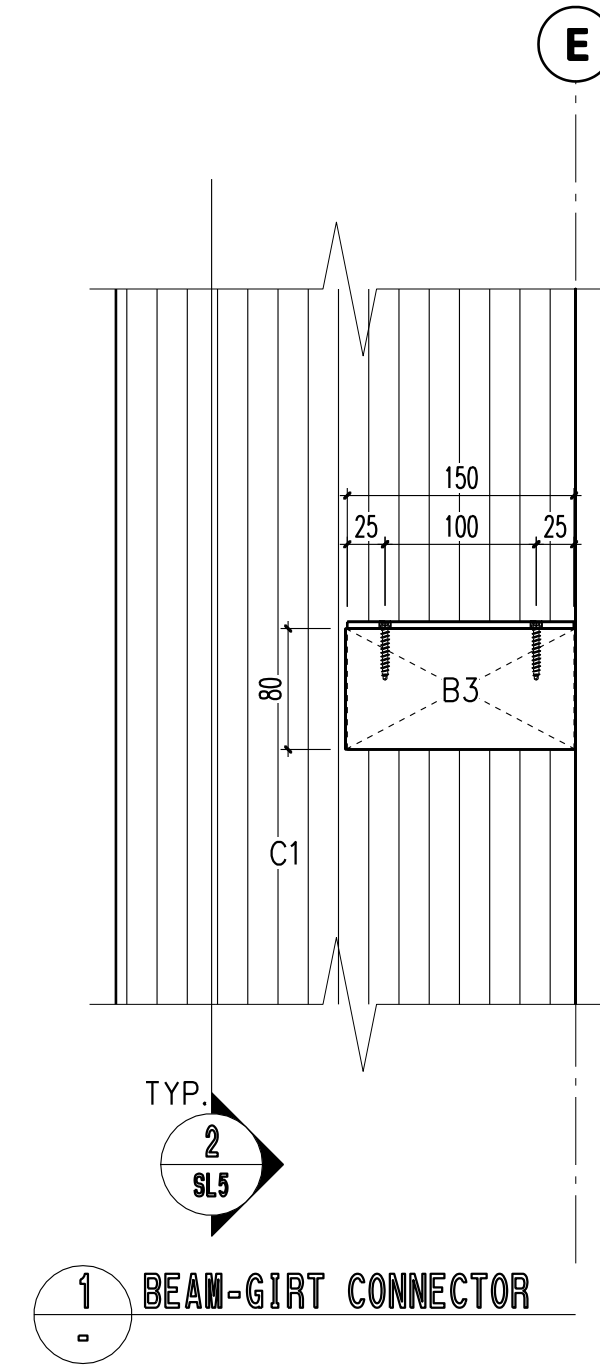
α-4pl x 150 x 188 BENT PLATE

POWDER-COAT BLACK

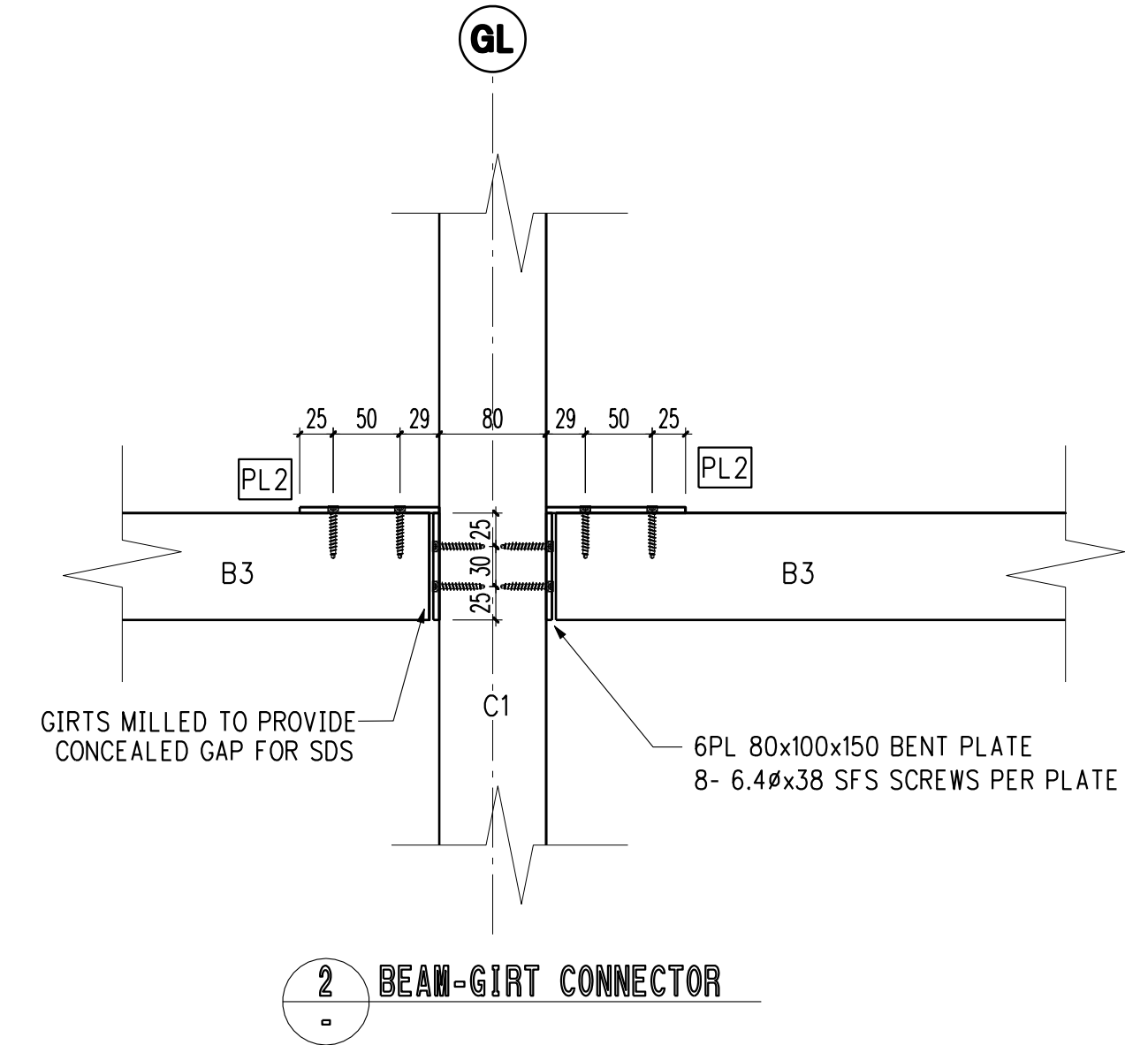


60ø x 70lg ROUND HSS
w/ HOLE FOR THREADED ROD
C/W NUT AND WASHER FOR ROD
AS PER DETAIL 4, SL4

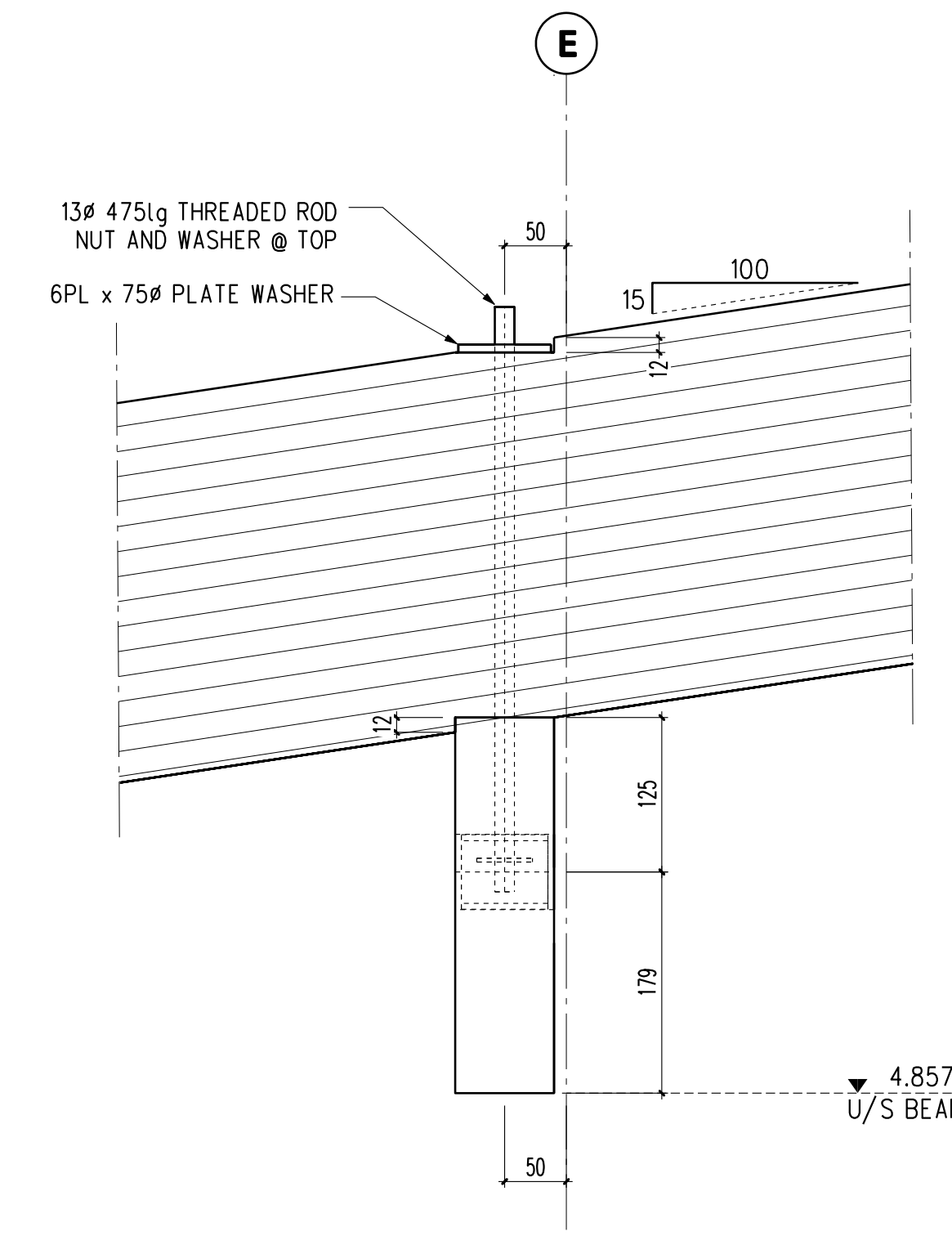
3 B13 CONNECTIONS



1 B1 B13 CONNECTOR



2 B2 B13 CONNECTOR



4 B3 CONNECTIONS

HARDWARE & STEEL
BY STRUCTURLAM BY OTHERS

NOTES:

ISSUED FOR CONSTRUCTION
Date: August 11th, 2011

Attn. Steel Suppliers
Where there is a difference between the plate list and the dimensioned drawings, the drawings shall be deemed correct.

NO.	DATE	CHANGE	BY	CH
1	Aug 11/11	ISSUED FOR CONSTRUCTION		CrS
2	Aug 9/11	OUT FOR APPROVALS ONLY		CrS
3	July 4/11	OUT FOR APPROVALS ONLY		CrS

FRAMING SPECIFICATIONS	
HOLES	1/8" larger than bolt.
SLOTS	1/8" wider than plate th.

SPECIAL INSPECTIONS	
CWB or AWS	NO
MPI	NO
TITLE 24	NO

STRUCTURLAM SPECIFICATIONS	
SPECIES & STRESS GRADE	D.FIR, 24f-EX & 16c-E (UNO)
TYPE OF GLUE	RESORCINOL
SIZE OF LAMINATIONS	1 1/2"
APPEARANCE GRADE	QUALITY & INDUSTRIAL
WRAPPING	INDIVIDUAL POLY
STAIN	1 COAT SIDE SEALER
CAMBER	NONE
INSPECTION	CSA-0122

STEEL	300W
FINISH	Powder-Coat Black

BOLT/LAG GRADE	ASTM A307 U/N
FINISH	Hot Dipped Galvanized

WELDS	Conform To CSA W59, Fabricator & Erector To Be Fully Approved By The CWB To CSA W411 All Welders To Be CWB Certified. Use 49XX Electrodes
-------	---

MARK ALL CONNECTORS WITH TAG

STRUCTURLAM PRODUCTS LTD.
2176 Government St.
Penitcton, B.C. V2A 8B5
Ph: 250-492-8912
FAX 250-492-8906
Website: www.structurlam.com
Email: sales@structurlam.com

PROJECT
Summerland Civic Building
Job #16774

PROJECT LOCATION
Summerland
British Columbia

ARCHITECT
KMBR Architects

ENGINEER
Fast + Epp

CONTRACTOR
Unitech Construction

DATE	SHEET	REV.
August 11th, 2011	SL5 of 5	

Detailer: CRS
This drawing is the property of Structurlam Products and cannot be used or copied without their written permission.
All Drawings Created with CadWORKS 3d V17 & 2d V17

PL1 PL2 HSS1