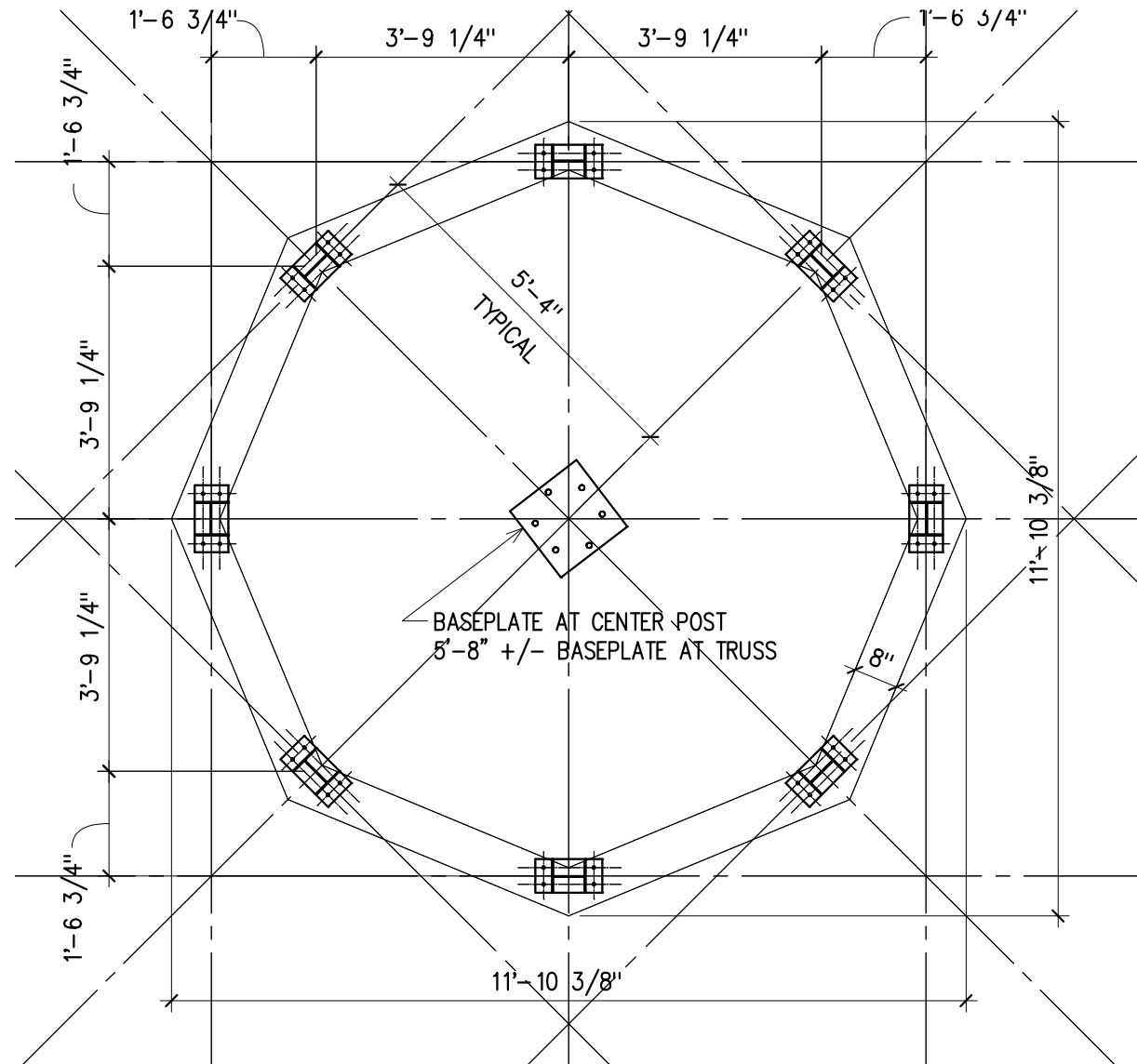


B1 FOUNDATION/ BASE PLATE LAYOUT PLAN
3/8" = 1'-0"



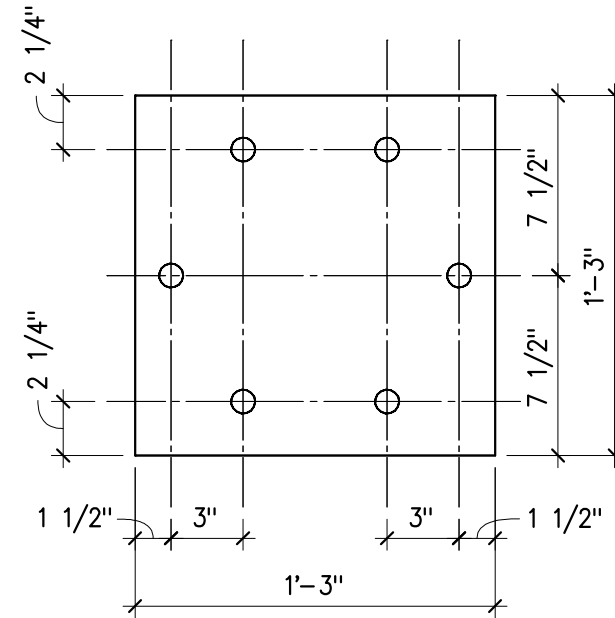
NOTES:

1. THE LAYOUT DEPICTED ON THIS PLAN IS BASED ON FIELD MEASUREMENTS TAKEN AT THE ORIGINAL INSTALLATION. THE FIELD INSTALLATION EXHIBITS MINOR DIMENSIONAL DISCREPANCIES WHICH ARE NOT SHOWN HERE. THE DIMENSIONS SHOWN ARE AN ESTIMATED AVERAGE OF THE VARYING ACTUAL DIMENSIONS.
2. THE FOUNDATION SHOWN HERE REPRESENTS EXISTING FIELD CONDITIONS. THIS DRAWING DOES NOT REPRESENT ACTUAL DESIGN REQUIREMENTS FOR NEW FOOTING OR FOUNDATIONS.

KIT HOUSE GENERAL INFORMATION:

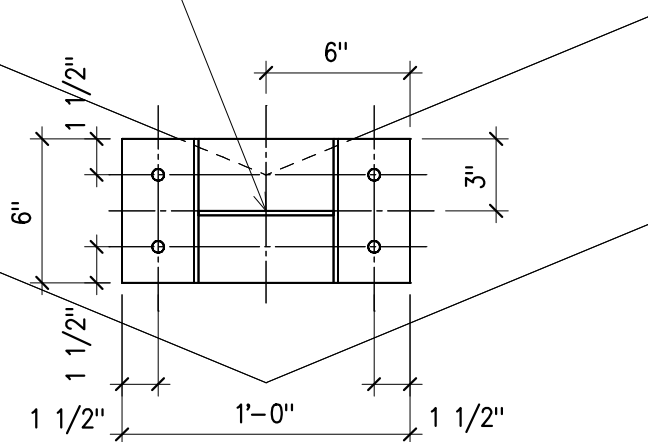
SQUARE FOOTAGE = APPROXIMATELY 780 SQ FT
FLOOR TO UNDERSIDE OF TRUSS = 7'-7"
EACH LEG OF OCTOGON = 12'-8"

C3 BASE PLATE AT CENTER POST
1 1/2" = 1'-0"



LAYOUT POINT FOR ALL
BASE PLATES @ FACE OF
VERTICAL PLATE

FOUNDATION WALL
BELOW



A3 BASE PLATE AT FLOOR TRUSS - TYP
1 1/2" = 1'-0"

