

BR/

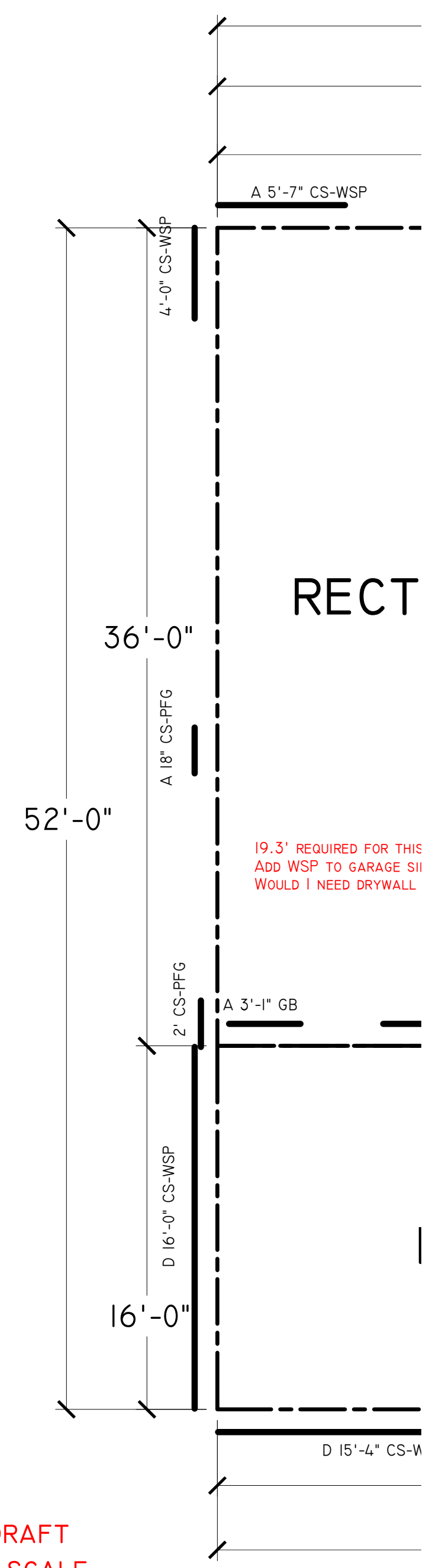
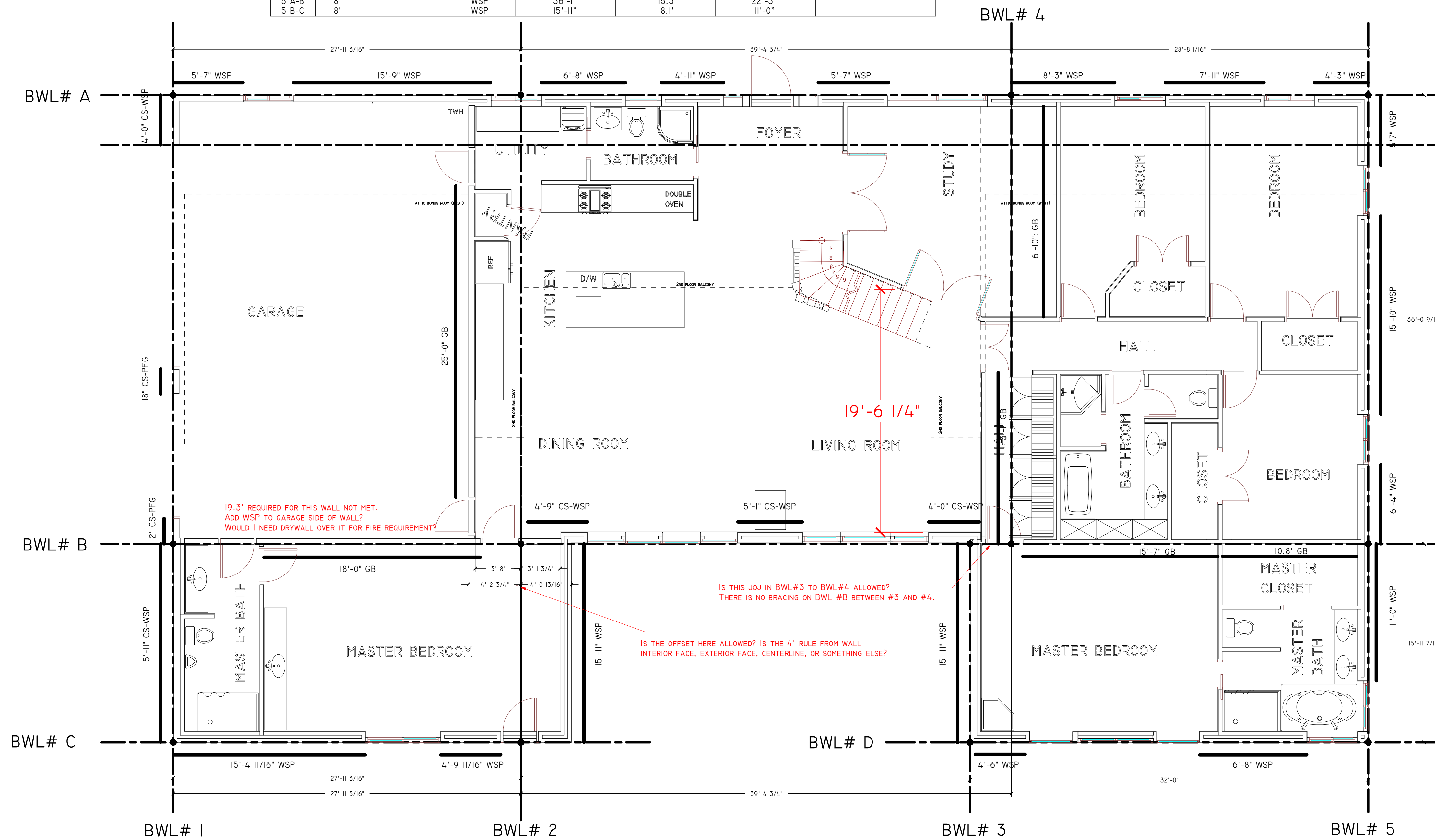
# BRACED WALL PLAN PER IRC 2012 R602.10

BRACED WALL CALCULATIONS (PER R602.10.3 WITH APPLICABLE ADJUSTMENTS)							
WALL #	CEILING HEIGHT	OPENING HEIGHT ADJACENT TO BRACED WALL	TYPE(S) OF BRACED WALL PANEL	DISTANCE BETWEEN BRACED WALLS	REQUIRED TOTAL LENGTH OF BRACING	PROVIDED TOTAL LENGTH OF BRACING	NOTES
A 1-2	9'		WSP	28'-5"	11.2'	21'-4"	
A 2-4	8'		WSP	38'-7"	15.3'	17'-4"	
A 4-5	8'		WSP	28'-11"	11.2'	20'-5"	
B 1-2	8'		GB	28'-5"	19.3'	17'-4"	19.3' REQUIRED FOR THIS WALL NOT MET. ADD WSP TO GARAGE SIDE OF WALL? CAN I ADD WSP TO GARAGE WALL? WOULD I NEED DRYWALL OVER IT FOR FIRE REQUIREMENT?
B 2-4	8'		WSP	38'-10"	12.2'	14'-0"	
B 4-5	8'		GB	28'-11"	19.3'	26'-5"	
C 1-2	8'		WSP	28'-5"	11.2'	20'-2"	
D 3-5	8'		WSP	31'-2"	12'	12'-7"	
1 A-B	8'		PFG	36'-1"	15.3'	17.9'	
1 B-C	8'		WSP	15'-11"	8.1'	15'-11"	
2 A-B	9'		GB	36'-1"	21.8'	25'-0"	
2 B-C	8'		WSP	15'-11"	8.1'	15'-11"	
3 B-D	8'		WSP	15'-11"	8.1'	15'-11"	
4 A-B	8'		GB	36'-1"	25.4'	30'-7"	
5 A-B	8'		WSP	36'-1"	15.3'	22'-3"	
5 B-C	8'		WSP	15'-11"	8.1'	11'-0"	

MINIMUM REQUIRED BRACING LENGTH (P)	
MINIMUM REQUIRED BRACING LENGTH ON EACH LONG SIDE	
LENGTH OF SHORT SIDE (F)	
10	2.6
20	4.6
30	6.5
40	7.8
50	9.8
60	11.7

INTERPOLATED VALUES (NO ADJUSTMENTS)		INTER (8' V ADJUSTM)
WALL LENGTH	OPPOSITE WALL BRACING LENGTH	WALL LENG
16'	3.8'	16'
24'	5.36'	24'
31'	6.63'	31'
32'	6.76'	32'
36'	7.28'	36'
41'	8'	41'

General Notes		
No.	Revision/Issue	Date



## BRACED WALL LINE PLAN

THIS DRAFT NOT TO SCALE

### BRACED WALL PLAN

1/4" = 1'-0"

Project Name and Address	
Drawn By	Sheet
ADAM GOLDENSTEIN	BWL
Date	
9/14/17	
Scale	
1/4"=1'-0"	