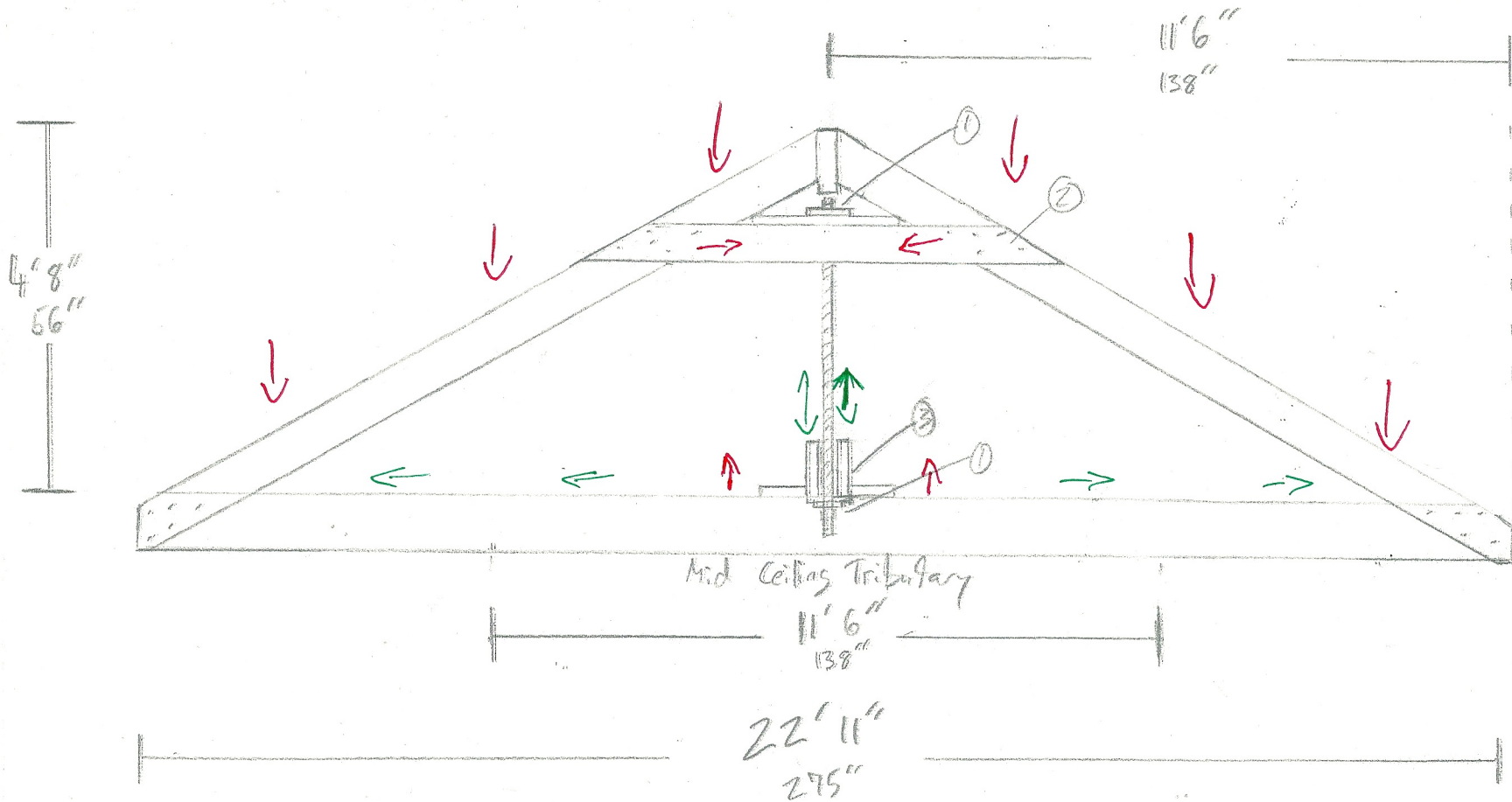


Max Rafter Span, 15 psf dead / 30 psf Snow = 11'1"

Max ceiling joist span, no storage = 16'6" / limited storage = 12'8"



Mid ceiling Tributary

Dead load = 10 psf x 11.5 = 115 plf
 Live load = 10 psf x 11.5 = 115 plf
 Total = 230 plf

Entire load = 230 plf x 20.5 ft = 4,715 #

Connection Details

- ① ② ASTM A563 A Hex nuts, (1) ASTM F3044 washer, (1) 3x3^{3 gauge} Simpson bearing plate, (1) 2x6
- ② glued + screwed per IRC prescription (TBD)
- ③ TBD