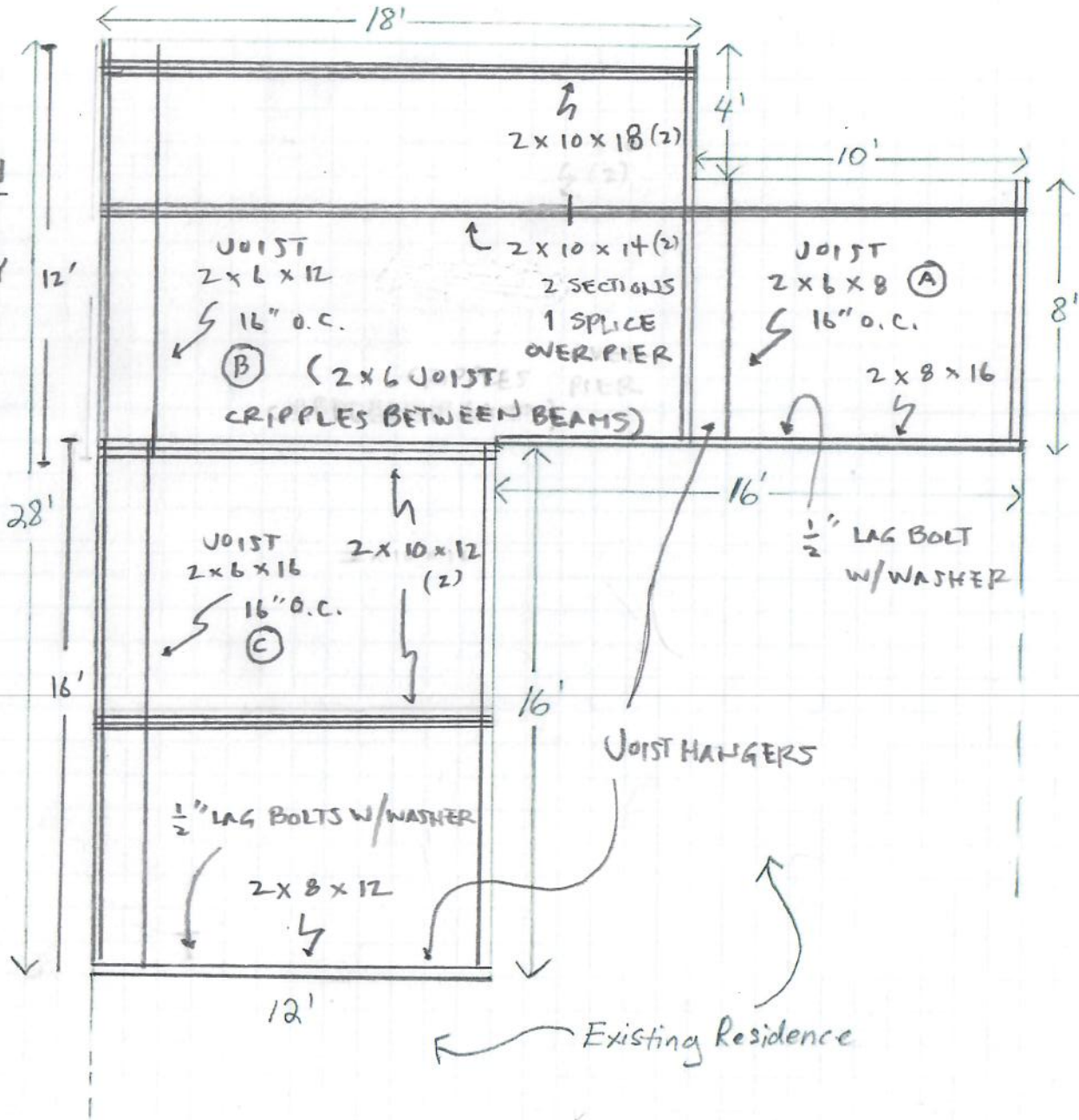
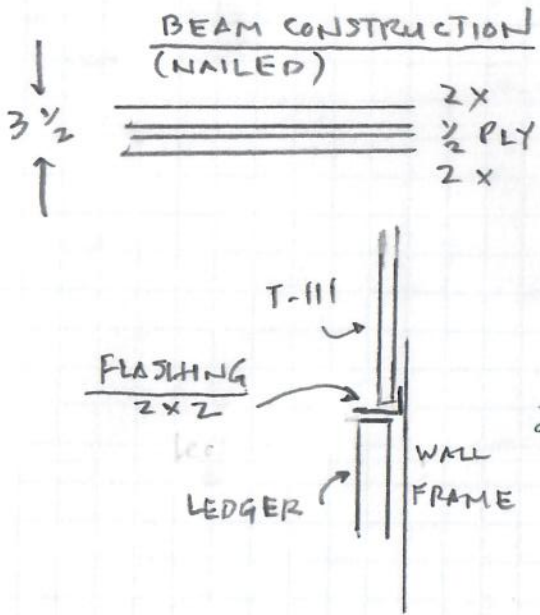
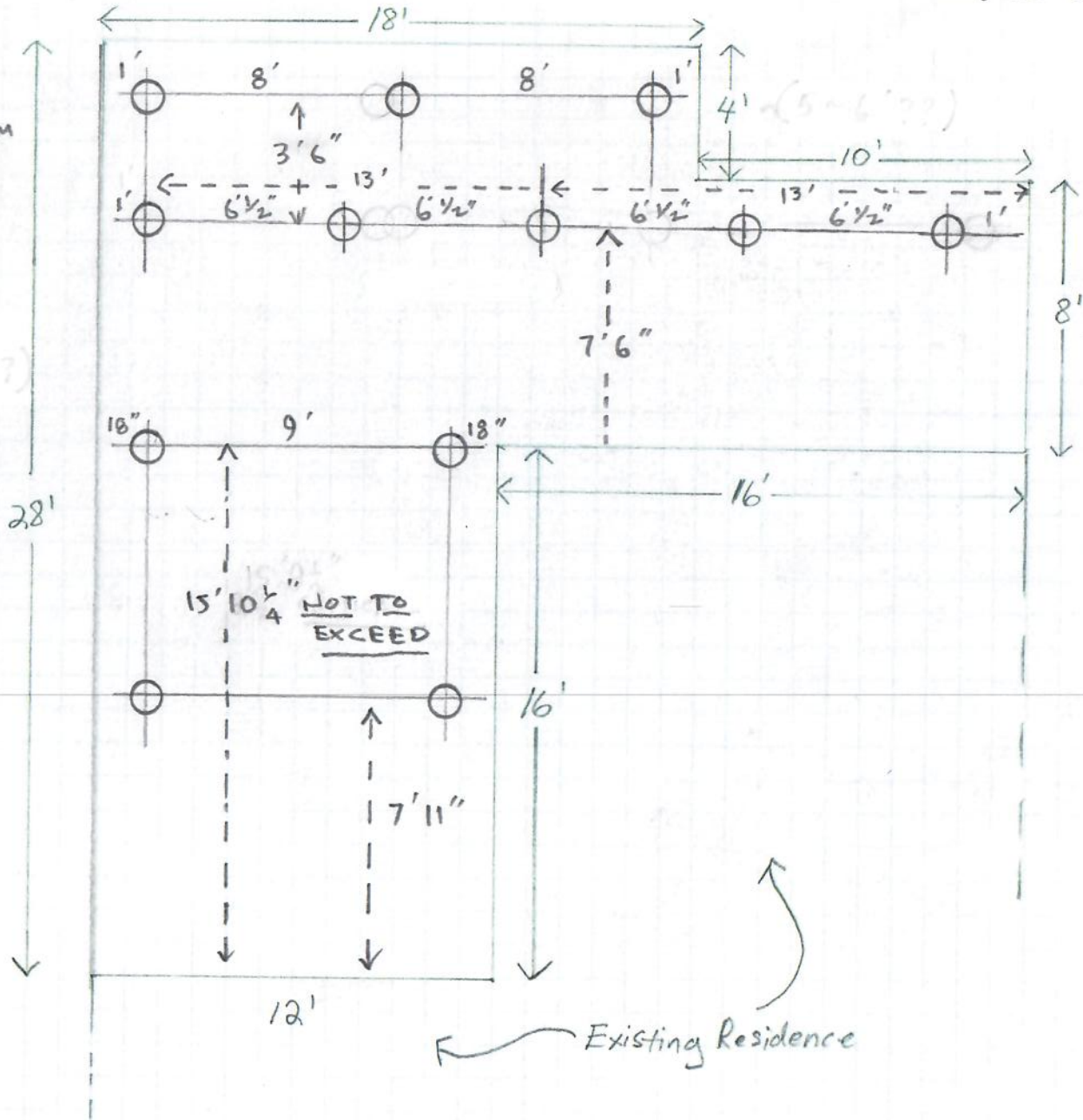
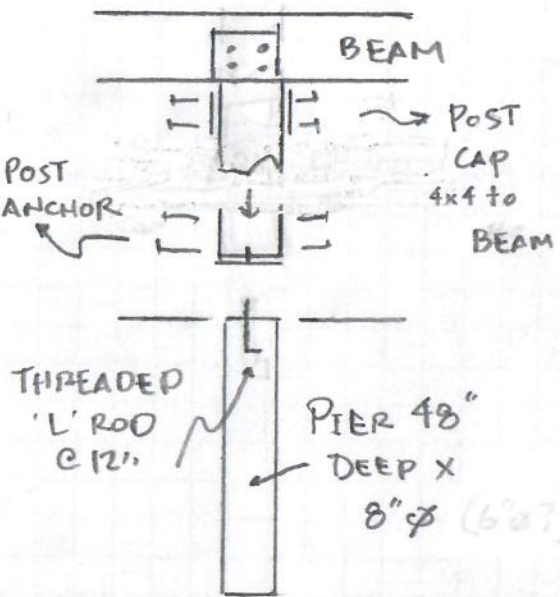


STRUCTURAL



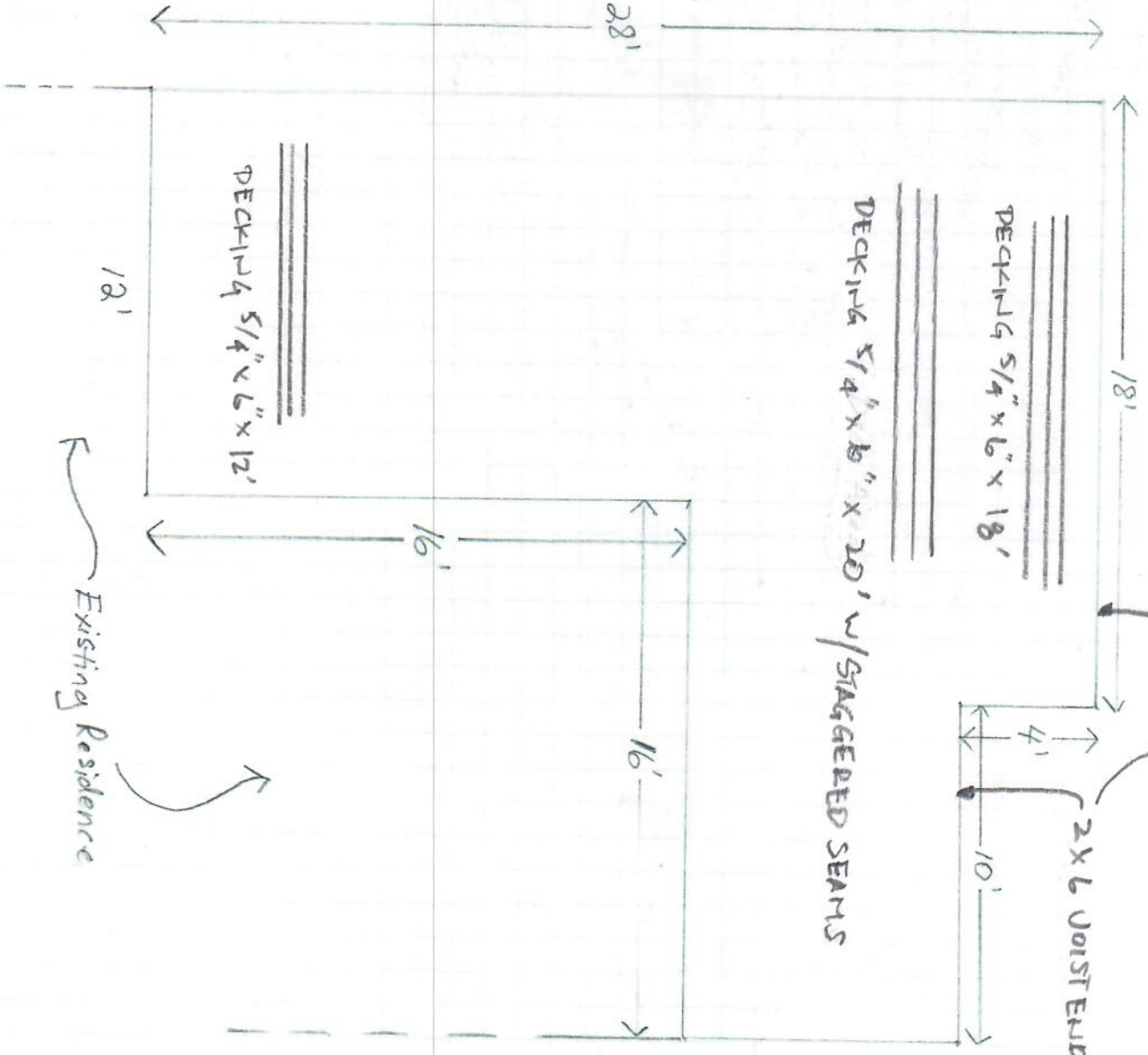
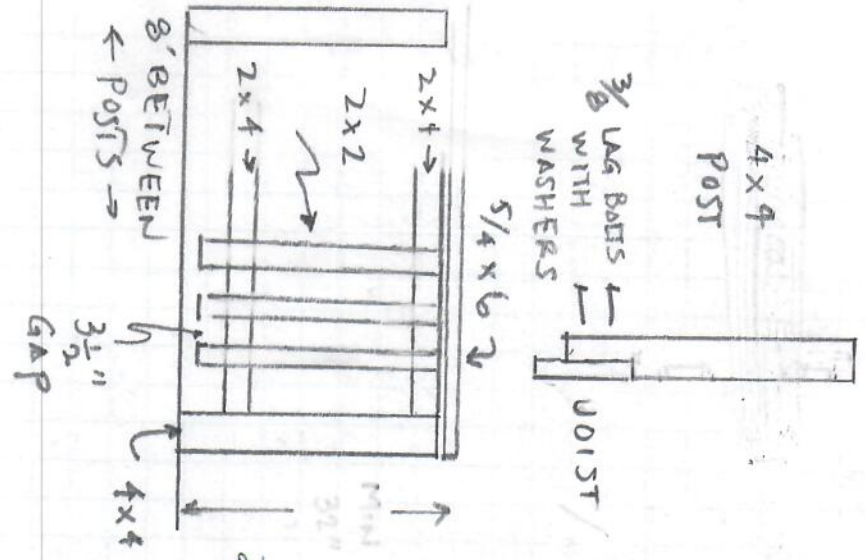
POSTS

JOIST CANTILEVER 16"
BEAM CANTILEVER 1'0"



RAILING + DECK + STAIRS

STAIRS
 18' TREAD
 RISER 7" TREAD 11"
 HAND RAILS X 3



STAIRS
 8'
 RISER 7" TREAD 11"
 HAND RAILS X 2

Catskills Deck

(Spource: Menard's Chicago)

(Material: AC2 pressure treated green)

| Size | Lenh | Qty | Purpose | Price | Total | Comments | Cedartone |
|-----------------|------|-----|----------------------------|----------|-------------|-------------------------------------|-----------|
| 2 x 8 | 16 | 1 | Ledger Board | \$ 24.81 | \$ 24.81 | 2 x 10? Verify. | |
| 2 x 8 | 12 | 1 | Ledger Board | \$ 17.52 | \$ 17.52 | | |
| 2 x 10 | 12 | 4 | Beam | \$ 26.68 | \$ 106.72 | | |
| 2 x 10 | 14 | 4 | Beam | \$ 32.21 | \$ 128.84 | | |
| 2 x 10 | 18 | 2 | Beam | \$ 52.99 | \$ 105.98 | | |
| 2 x 6 | 8 | 7 | Joist A | \$ 9.96 | \$ 69.72 | | |
| 2 x 6 | 12 | 13 | Joist B | \$ 15.83 | \$ 205.79 | | |
| 2 x 6 | 16 | 9 | Joist C | \$ 21.17 | \$ 190.53 | | |
| 2 x 6 | 10 | 5 | Cripples | \$ 11.88 | \$ 59.40 | | |
| 4 x 4 | 10 | 2 | Posts A | \$ 10.98 | \$ 21.96 | 20" avg each estimated | |
| 6 x 6 | 12 | 2 | Posts B | \$ 57.20 | \$ 114.40 | | |
| 2 x 2 | 3 | 100 | Railing Spindles | \$ 2.29 | \$ 229.00 | | |
| 2 x 4 | 10 | 8 | Spindle Cross Supports | \$ 8.57 | \$ 68.56 | | |
| 4 x 4 | 8 | 10 | Railing Supports | \$ 10.98 | \$ 109.80 | 4" each support | |
| Treated Plywood | 1/2" | 2 | Beam Construction | \$ 52.78 | \$ 105.56 | 4/9.25x8=40' | |
| 5/4 x 6 | 12 | 24 | Decking | \$ 17.17 | \$ 412.08 | | |
| 5/4 x 6 | 18 | 8 | Decking | \$ 30.16 | \$ 241.28 | | |
| 5/4 x 6 | 20 | 22 | Decking | \$ 33.28 | \$ 732.16 | Includes Railing Top Board (2 each) | |
| 1/2 Lag Bolts | | 20 | Ledger Board to Rim Joists | | | | |
| 1/2 Washers | | 20 | | | | | |
| 3/8 Lag Bolts | | | Rails | | | | |
| 3/8 Washers | | | | | | | |
| Post Anchors | | | | | | | |
| Post Caps | | | | | | | |
| Joist Hanger | 6" | 7 | Joists A | | | 21 total | |
| Joist Hanger | 6" | 5 | Joists B | | | | |
| Joist Hanger | 6" | 9 | Joists C | | | | |
| Joist Nails | | Bx | | | | | |
| Deck Screws | | Bx | | | | | |
| Flashing | 10 | 3 | 2 x 2 | \$ - | \$ - | | |
| Total | | | | | \$ 2,944.11 | | |
| Decking Tool | | | Dale's | | | | |
| Compressor | | | Dale's | | | | |
| Nail Gun | | | Dale's | | | | |